



FACT FILE

1983-1987

DePaul University
Office Of
Institutional Planning
And Research

Compiled by:

Cecel A. Vesper
Research Analyst

Julianne T. Stam
Research Assistant

December, 1987

PUBLIC DISTRIBUTION

The Office of Institutional Planning and Research has compiled this fifth issue of the DePaul University Fact File, 1983-87 for you and your office. It presents a wide array of statistics on student enrollment, demographic characteristics, profiles by major groups, financial aid, and other University statistics.

This year's Fact File has been expanded to include graphs on selected topics. Most of the tables provide the reader with a five-year perspective, from 1983 to 1987, that illustrates major trends occurring over the last few years.

This publication has been designed for the readership of DePaul University. Each academic and administrative manager will receive a copy, as will the presidents of the three University Councils. In addition, many DePaul staff members will find this booklet a valuable source for answering information requests. We hope that you will share this publication with your office staff, but that you do not distribute the DePaul Fact File outside of the University.

Our objective, in compiling this databook, is to provide accurate, relevant, and timely information to the University community. However, the interpretation and judicious use of the information is the responsibility of the reader. Entailed in our booklet are statistics intended to answer questions of fact, but these must be combined with sound academic and professional judgment in planning and decision-making.

Finally, on behalf of our office, best wishes for the holiday season.

Susy S. Chan
Director
Office of Institutional
Planning and Research

December, 1987

List of Tables and Graphs

SECTION 1 Enrollment Trends

- Graph 1 Headcount Enrollments by Level
- Table 1.1 Headcount Enrollments by Level and IBHE FTE
- Graph 1.1 Headcount Enrollments by Level
- Table 1.2 Credit Hour Enrollments
- Table 1.3 Credit Hour Enrollments by College
- Graph 2 Credit Hour Enrollments by College
- Table 1.4 Headcount Enrollments by Class
- Table 1.5 Headcount Enrollments by College
- Graph 3 Full-Time and Part-Time Enrollments by College
- Table 1.6 Part-Time and Full-Time Enrollments by College
- Table 1.7 Part-Time Enrollments in Percent by College
- Table 1.8 Program Enrollments by College

SECTION 2 Demographic Characteristics of Students

- Graph 4 University Racial Distribution
- Table 2.1 Racial Distribution by Level
- Table 2.2 Racial Distribution by College
- Table 2.3 Sex Distribution by Level
- Graph 5 Sex Distribution by College
- Table 2.4 Sex Distribution by College
- Table 2.5 Sex Distribution by College by Race
- Table 2.6 Age Distribution by Level
- Table 2.7 Age Distribution by College
- Table 2.8 Race by Sex by Age Distribution

- Table 2.9 Current Residence by College
- Graph 6 Geographic Origins of Undergraduate Day Students
- Table 2.10 Geographic Origins of Undergraduate Day Students
- Table 2.11 Undergraduate Demographic Profile by Race
- Table 2.12 Graduate Demographic Profile by Race
- Table 2.13 Law Student Profile by Race

SECTION 3 Admissions Profile of New Students

- Table 3.1 Applications, Acceptances and Enrollment Trends-
Undergraduate
- Graph 7 Sources of Undergraduate Students
- Table 3.2 Sources of Undergraduate Students
- Table 3.3 Freshmen Academic Profile
- Graph 8 Act Scores of First-Time Freshmen by Race -
DePaul and National
- Table 3.4. Act Scores of First-Time Freshmen by Race -
DePaul and National
- Table 3.5 Freshmen Demographic Profile
- Table 3.6 Freshmen Demographic Profile by College
- Table 3.7 Freshmen Academic Profile by College
- Table 3.8 Transfer Demographic Profile
- Table 3.9 Transfer Demographic Profile by College
- Table 3.10 Transfer Academic Profile by College
- Table 3.11 Applications, Acceptances, Enrollment Trends -
Graduate
- Table 3.12 Sources and Enrollment of Graduate Students
- Table 3.13 New Graduate Student Demographic Profile
- Table 3.14 Applications, Acceptances, and Enrollment
Trends-Professional
- Table 3.15 Sources and Enrollments of Law Students

Table 3.16 New JD Students Demographic Profile

SECTION 4 Degree Recipients

Graph 9 Degrees Conferred

Table 4.1 Degrees Conferred

Table 4.2 Degrees Conferred by College

Table 4.3 Degrees Conferred by Major

SECTION 5. Student Financial Aid/University Finances

Table 5.1 Annual Student Financial Aid

Table 5.2 DePaul University Balance Sheet

Table 5.3 Statement of Changes in Fund Balances

Table 5.4 Statement of Current Fund Revenues, Expenditures
and Other Changes

SECTION 6. Faculty and Staff Statistics

Table 6.1 Full-Time Faculty by Rank and Sex

Table 6.2 Faculty Tenure Status by Rank and Sex

Table 6.3 Faculty and Administrative Staff

SECTION 7. Other University Statistics

Table 7.1 University Library Holdings

Table 7.2 Research Activity

Table 7.3 Credit Hour Enrollments by Building

Graph 1

HEADCOUNT ENROLLMENTS BY LEVEL FALL 1983 - FALL 1987

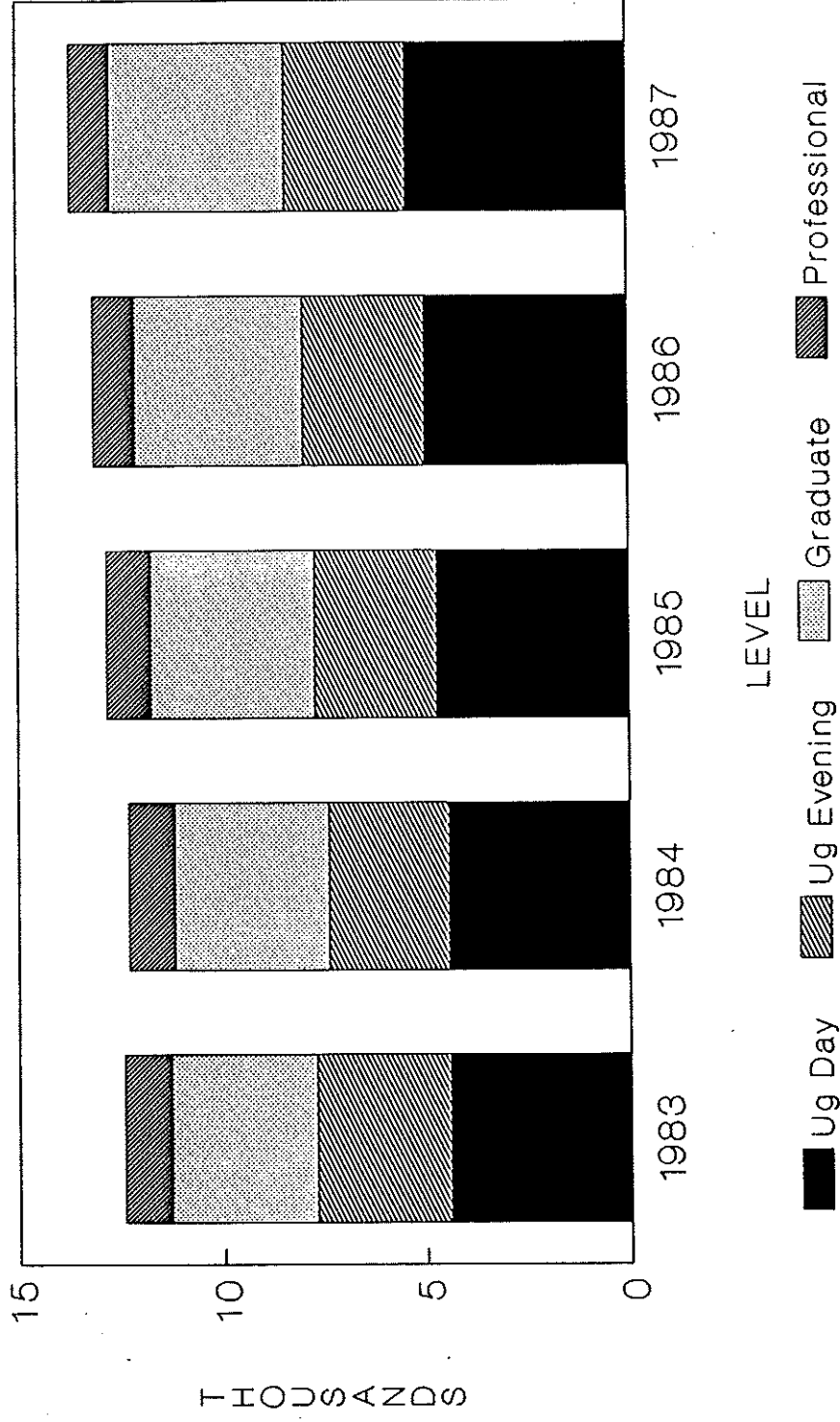


Table 1.1

Headcount Enrollments by Level and IBHE FTE
Fall 1983 - Fall 1987

	1983	1984	1985	1986	1987
	----	----	----	----	----
Undergraduate					
Day	4,416	4,425	4,710	4,988	5,428
% change	-4.5	0.2	6.4	5.9	8.8
Evening	3,278	2,954	3,004	2,988	2,961
% change	-0.2	-9.9	1.7	-0.5	-0.9
Subtotal	7,694	7,379	7,714	7,976	8,389
% change	-2.7	-4.1	4.5	3.4	5.2
Graduate	3,606	3,821	4,052	4,162	4,328
% change	-3.6	6.0	6.0	2.7	4.0
Professional	1,147	1,126	1,070	994	971
% change	-5.8	-1.8	-5.0	-7.1	-2.3
Total	12,447	12,326	12,836	13,132	13,688
% change	-3.3	-1.0	4.1	2.3	4.2
IBHE FTE	8,766	8,534	8,948	9,244	9,620
% change	-3.7	-2.6	4.9	3.3	4.1

FTE is computed by dividing undergraduate hours by 15, and graduate and law hours by 12, as defined by IBHE.

Source: Registrar's Report

OIPR 12-87

Table 1.2

Credit Hour Enrollments and Annual Percentage Change
Fall 1983 - Fall 1987

Level	1983	1984	1985	1986	1987
Undergraduate					
Day	63,369	62,417	66,536	70,693	76,549
% Change	-5.2	-1.5	6.6	6.2	8.3
Evening	24,428	20,943	22,075	22,397	21,119
% Change	1.5	-14.3	5.4	1.5	-5.7
Subtotal	87,797	83,360	88,611	93,090	97,668
% Change	-3.5	-5.1	6.3	5.1	4.9
Graduate	21,011	22,225	23,727	24,520	25,318
% Change	-3.3	5.8	6.8	3.3	3.3
Professional	13,919	13,461	12,716	11,875	11,930
% Change	-5.7	-3.3	-5.5	-6.6	0.5
University Total	122,727	119,046	125,054	129,485	134,916
% Change	-3.7	-3.0	5.0	3.5	4.2

Source: Registrar's Report

OIPR 12-87

Graph 2

Credit Hour Enrollments by College Fall 1983 - Fall 1987

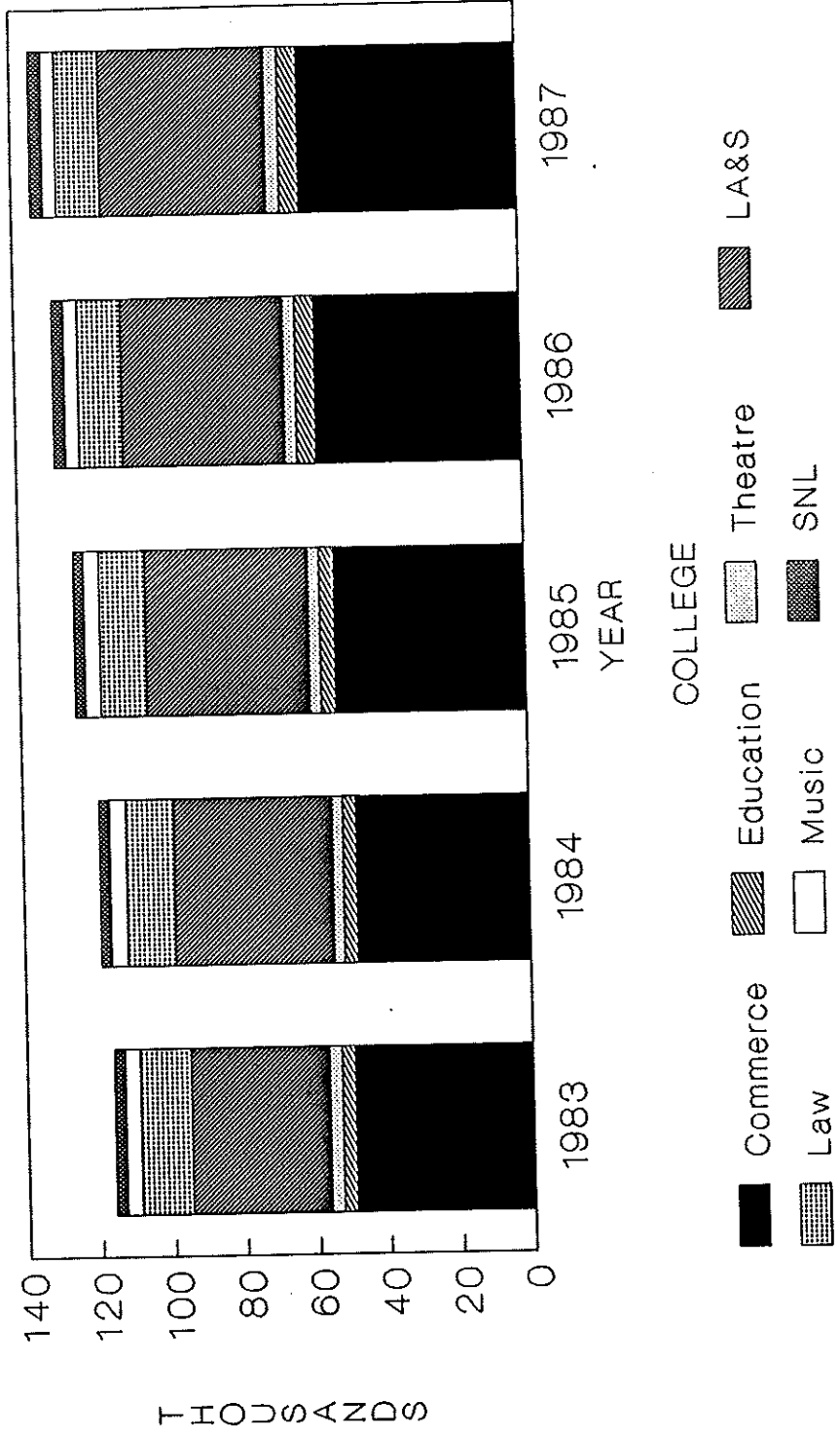


Table 1.3

Credit Hour Enrollments by College
Fall 1983 - Fall 1987

	1983	1984	1985	1986	1987
	----	----	----	----	----
Undergraduate					

COMMERCE					
Day	26,596	26,508	30,763	34,484	36,794
Evening	9,919	8,666	9,000	9,966	9,572
Graduate	12,872	12,932	13,186	12,799	14,390
Subtotal	49,387	48,106	52,949	57,249	60,756
EDUCATION					
Day	2,021	2,118	2,680	3,300	3,806
Evening	948	637	604	623	755
Graduate	683	779	793	1,198	760
Subtotal	3,652	3,534	4,077	5,121	5,321
THEATRE SCHOOL					
Day	3,242	2,652	2,684	2,754	3,094
Graduate	400	444	625	714	706
Subtotal	3,642	3,096	3,309	3,468	3,800
LA & S					
Day	27,871	27,255	26,720	26,642	29,536
Evening	10,591	8,875	9,717	8,988	7,448
Graduate	6,588	7,578	8,470	9,185	8,871
Subtotal	45,050	43,708	44,907	44,815	45,855
LAW					
Day	10,286	10,081	9,578	9,139	9,343
Evening	3,633	3,380	3,138	2,736	2,587
Subtotal	13,919	13,461	12,716	11,875	11,930
MUSIC					
Day	3,636	3,884	3,689	3,513	3,319
Graduate	469	493	531	385	441
Subtotal	4,105	4,377	4,220	3,898	3,760
SCHOOL FOR NEW LEARNING					
Evening	2,970	2,765	2,754	2,820	3,344
Graduate	-	-	122	239	150
Subtotal	2,970	2,765	2,876	3,059	3,494
Undergraduate Day	63,366	62,417	66,536	70,693	76,549
Undergraduate Evening	24,428	20,943	22,075	22,397	21,119
Undergraduate Subtotal	87,794	83,360	88,611	93,090	97,668
Graduate Subtotal	21,012	22,226	23,727	24,520	25,318
Law Subtotal	13,919	13,461	12,716	11,875	11,930
University Total	122,725	119,047	125,054	129,485	134,916

Table 1.4

Headcount Enrollments by Class
Fall 1983 - Fall 1987

	1983	1984	1985	1986	1987
	----	----	----	----	----
Undergraduate					
Freshmen	1,248	1,427	1,615	1,476	1,665
Sophomore	1,237	1,267	1,477	1,755	1,975
Junior	1,650	1,507	1,543	1,584	1,596
Senior	1,787	1,669	1,665	1,778	1,905
Non-Degree	1,648	1,303	1,122	1,101	953
Student At Large	78	67	57	65	75
Certificate*	44	138	233	212	205
Pending	2	1	2	5	15
Undergraduate Subtotal	7,694	7,379	7,714	7,976	8,389
Graduate					
Non-Degree	146	218	249	192	171
Master's	3,274	3,464	3,678	3,713	4,031
Doctoral	52	37	32	21	32
Professional	1,147	1,126	1,070	994	971
Pending	134	102	93	236	94
Graduate Subtotal	4,753	4,947	5,122	5,156	5,299
University Total	12,447	12,326	12,836	13,132	13,688

*Computer Institute students were reclassified in 1984
from non-degree transfers to certificate students.

Source: Registrar's Report

OIPR 12-87

Table 1.5

Headcount Enrollments by College
Fall 1983 - Fall 1987

	1983	1984	1985	1986	1987
	----	----	----	----	----
Undergraduate					

COMMERCE					
Day	1,804	1,844	2,142	2,414	2,590
Evening	1,425	1,305	1,281	1,316	1,325
Graduate	2,287	2,346	2,411	2,346	2,603
Subtotal	5,516	5,495	5,834	6,076	6,518
EDUCATION					
Day	139	147	177	218	257
Evening	103	66	71	67	79
Graduate	123	143	159	242	146
Subtotal	365	356	407	527	482
THEATRE SCHOOL					
Day	193	162	155	159	180
Graduate	25	29	43	45	46
Subtotal	218	191	198	204	226
LA & S					
Day	2,012	1,982	1,949	1,934	2,150
Evening	1,270	1,089	1,134	1,053	882
Graduate	1,105	1,241	1,366	1,457	1,439
Subtotal	4,387	4,312	4,449	4,444	4,471
LAW					
Day	704	706	670	642	639
Evening	443	420	400	352	332
Subtotal	1,147	1,126	1,070	994	971
MUSIC					
Day	268	290	287	263	251
Graduate	66	62	60	48	53
Subtotal	334	352	347	311	304
SCHOOL FOR NEW LEARNING					
Evening	480	494	518	552	675
Graduate	-	-	13	24	41
Subtotal	480	494	531	576	716
Undergraduate Day	4,416	4,425	4,710	4,988	5,428
Undergraduate Evening	3,278	2,954	3,004	2,988	2,961
Undergraduate Subtotal	7,694	7,379	7,714	7,976	8,389
Graduate Subtotal	3,606	3,821	4,052	4,162	4,328
Law Subtotal	1,147	1,126	1,070	994	971
University Total	12,447	12,326	12,836	13,132	13,688

Graph 3

Full & Part-Time Enrollments By College Fall 1987

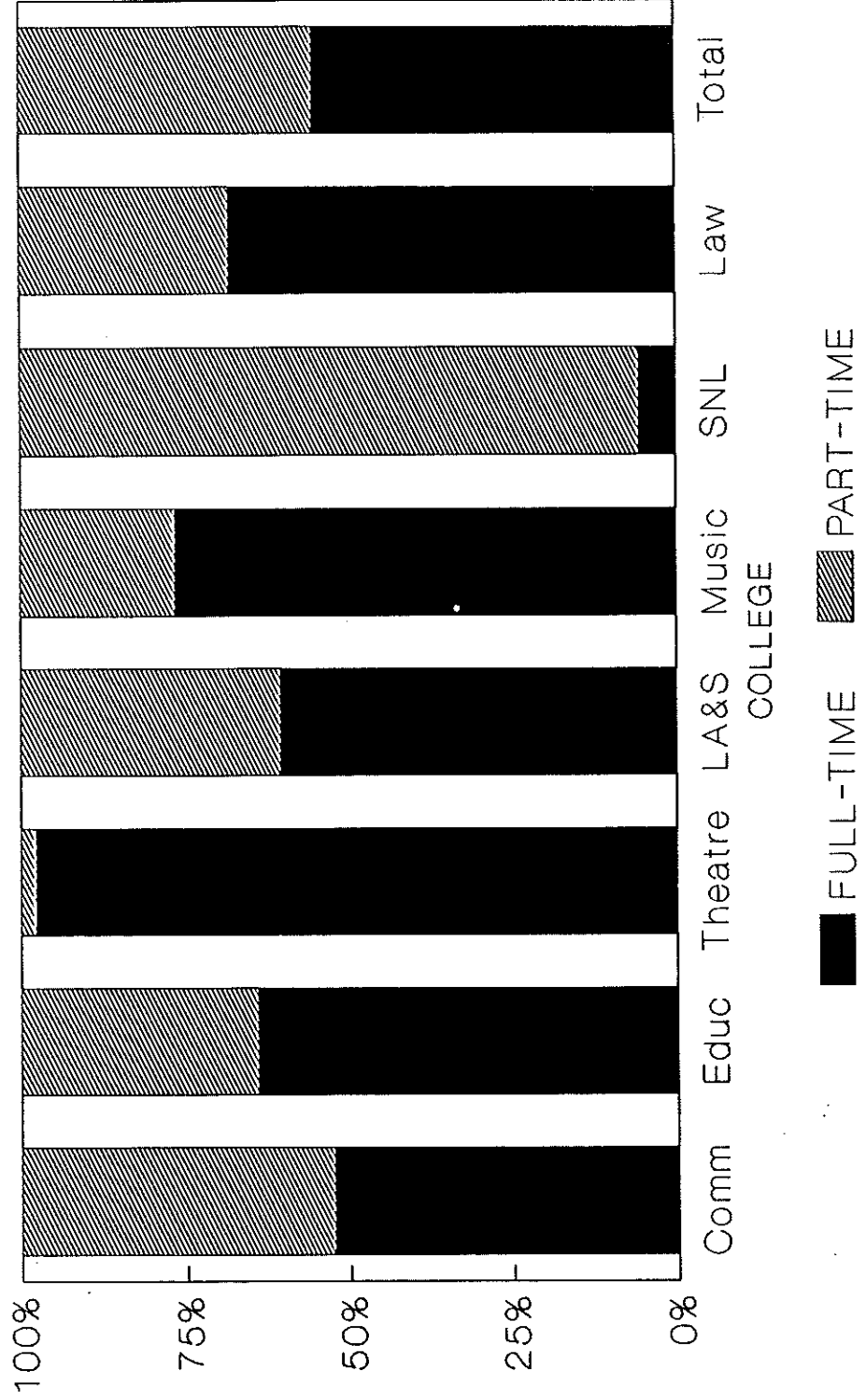


Table 1.6

Part-Time and Full-Time Enrollments by College
Fall 1983 - Fall 1987

	1983	1984	1985	1986	1987
	----	----	----	----	----
Undergraduate					
Commerce - Day					
Full-Time	1,700	1,692	1,976	2,207	2,322
Part-Time	104	152	166	207	268
Total	1,804	1,844	2,142	2,414	2,590
Commerce - Evening					
Full-Time	229	180	208	281	243
Part-Time	1,196	1,125	1,073	1,035	1,082
Total	1,425	1,305	1,281	1,316	1,325
Education - Day					
Full-Time	127	136	170	205	231
Part-Time	12	11	7	13	26
Total	139	147	177	218	257
Education - Evening					
Full-Time	43	28	21	23	25
Part-Time	60	38	50	44	54
Total	103	66	71	67	79
Theatre School					
Full-Time	190	157	155	158	176
Part-Time	3	5	0	1	4
Total	193	162	155	159	180
LA & S - Day					
Full-Time	1,739	1,713	1,684	1,672	1,834
Part-Time	273	269	265	262	316
Total	2,012	1,982	1,949	1,934	2,150
LA & S - Evening					
Full-Time	374	299	320	303	238
Part-Time	896	790	814	750	644
Total	1,270	1,089	1,134	1,053	882
Music					
Full-Time	218	232	217	203	197
Part-Time	50	58	70	60	54
Total	268	290	287	263	251
School for New Learning					
Full-Time	48	37	24	23	32
Part-Time	432	457	494	529	643
Total	480	494	518	552	675
Undergraduate Subtotal					
Full-Time	4,868	4,474	4,775	5,075	5,298
Part-Time	3,026	2,905	2,939	2,901	3,091
Total	7,894	7,379	7,714	7,976	8,389

Table 1.6 (continued)

Graduate	1983	1984	1985	1986	1987
-----	----	----	----	----	----
Commerce					
Full-Time	760	729	758	739	845
Part-Time	1,527	1,617	1,653	1,607	1,758
Total	2,287	2,346	2,411	2,346	2,603
Education					
Full-Time	43	45	37	35	53
Part-Time	80	98	122	207	93
Total	123	143	159	242	146
Theatre School					
Full-Time	24	28	43	45	45
Part-Time	1	1	0	0	1
Total	25	29	43	45	46
LA & S					
Full-Time	430	505	597	652	633
Part-Time	675	736	769	805	806
Total	1,105	1,241	1,366	1,457	1,439
Music					
Full-Time	37	39	40	32	36
Part-Time	29	23	20	16	17
Total	66	62	60	48	53
School for New Learning					
Full-Time	--	--	12	21	7
Part-Time	--	--	1	3	34
Total	--	--	13	24	41
Graduate Subtotal					
Full-Time	1,294	1,346	1,487	1,524	1,619
Part-Time	2,312	2,475	2,565	2,638	2,709
Total	3,606	3,821	4,052	4,162	4,328
Law					

Law - Day					
Full-Time	684	687	648	610	627
Part-Time	20	19	22	32	12
Total	704	706	670	642	639
Law - Evening					
Full-Time	62	69	55	45	36
Part-Time	381	351	345	307	296
Total	443	420	400	352	332
Law Subtotal					
Full-Time	746	756	703	655	663
Part-Time	401	370	367	339	308
Total	1,147	1,126	1,070	994	971

(continued)

Table 1.6 (continued)

University					

Full-Time	6,708	6,576	6,965	7,254	7,580
Part-Time	5,739	5,750	5,871	5,878	6,108
Total	12,447	12,326	12,836	13,132	13,688

1987 part-time enrollment is defined by the Registrar's Office as follows:
 Part-time Undergraduates: Enrolled for 11 quarter hours or less.
 Part-time Graduate: Enrolled for 7 quarter hours or less.
 Part-Time Law: Enrolled for 9 semester hours or less.
 Refer to the Registrar's Report for definitional changes in the law and graduate schools for the years 1983 through 1986.

Source: Registrar's Report

OIPR 12-87

Table 1.7
Part-Time Enrollments in Percent by College
Fall 1983 - Fall 1987

	1983	1984	1985	1986	1987
	----	----	----	----	----
	%	%	%	%	%
Undergraduate					

Commerce - Day	5.8	8.2	7.7	8.6	10.3
Commerce - Evening	83.9	86.2	83.8	78.6	81.7
Education - Day	8.6	7.5	4.0	6.0	10.1
Education - Evening	46.2	57.6	70.4	65.7	68.4
Theatre School	1.6	3.1	0.0	0.6	2.2
LA & S - Day	13.6	13.6	13.6	13.5	14.7
LA & S - Evening	70.6	72.5	71.8	71.2	73.0
Music	18.7	20.0	24.4	22.8	21.5
School for New Learning	90.0	92.5	95.4	95.8	95.3
Undergraduate Subtotal	39.3	39.4	38.1	36.4	36.8
Graduate					

Commerce	66.8	68.9	68.6	68.5	67.5
Education	65.0	68.5	76.7	85.5	63.7
Theatre School	4.0	3.5	0.0	0.0	2.2
LA & S	61.1	59.3	56.3	55.3	56.0
Music	43.9	37.1	33.3	33.3	32.1
School for New Learning	--	--	7.7	12.5	82.9
Graduate Subtotal	64.1	64.8	63.3	63.4	62.6
Law					

Law - Day	2.8	2.7	3.3	5.0	1.9
Law - Evening	86.0	83.6	86.3	87.2	89.2
Law Subtotal	34.9	33.0	32.2	34.1	31.7
University Total	46.1	47.0	45.7	44.8	44.6

1987 part-time enrollment is defined by the Registrar's Office as follows:
Part-time Undergraduate: Enrolled for 11 quarter hours or less.
Part-time Graduate: Enrolled for 7 quarter hours or less.
Part-time Law: Enrolled for 9 semester hours or less.
Refer to the Registrar's Report for definitional changes in the law and graduate schools for the years 1983 through 1986.

Table 1.8

Program Enrollments by College*
Fall 1987

	Day	Evening	Graduate	Total
-----	---	-----	-----	-----
Liberal Arts & Sciences				

Art	38	--	--	38
Artificial Intelligence	--	--	16	16
Biology	130	4	6	140
Chemistry	32	--	25	57
CICS	--	28	--	28
Clinical Psychology	--	--	63	63
Communications	250	27	--	277
Computer Career Program	--	91	--	91
Computer Science	328	166	721	1,215
Economics	29	7	26	62
English	74	17	29	120
English Language Institute	--	5	--	5
Executive Computer Program	--	--	26	26
Experimental Psychology	--	--	11	11
French	9	--	--	9
Geography	5	1	--	6
German	3	--	--	3
History	39	2	15	56
Industrial Psychology	--	--	21	21
Information Systems	--	--	73	73
Interdisciplinary Studies	--	--	12	12
Latin American Studies	3	--	--	3
Liberal Studies	--	--	21	21
Management of Info Systems	--	--	16	16
Math Education	--	--	42	42
Mathematics	57	10	12	79
Medical Technology	9	1	--	10
Nursing	117	33	40	190
Philosophy	18	2	41	61
Physics	40	3	12	55
Political Science	148	8	--	156
Psychology	167	21	--	188
Public Service	--	--	80	80
Radiologic Technology	6	--	--	6
Rehabilitation Services	--	6	49	55
Religious Studies	3	2	--	5
Social Science	8	1	--	9
Sociology	77	6	17	100
Spanish	6	1	--	7
Telecommunications	--	19	30	49
Urban Studies	1	--	--	1
Undecided	553	421	35	1,009
Subtotal	2,150	882	1,439	4,471

(continued)

Table 1.8 (continued)

College of Commerce	Day	Evening	Graduate	Total
Accounting	1,005	279	178	1,462
Association Management	--	--	15	15
Business Administration	24	32	--	56
Economics	41	15	29	85
Entrepreneurship	--	--	39	39
Finance	311	166	843	1,320
Human Resource Management	29	15	85	129
International Business	--	--	58	58
Management	402	150	--	552
Management of Info Systems	--	--	22	22
Marketing	234	56	329	619
Operations Management	17	2	113	132
Quantitative Methods	--	--	9	9
Systems	--	--	168	168
Taxation	--	--	373	373
Undecided	527	610	342	1,479
Subtotal	2,590	1,325	2,603	6,518
School of Education				

Secondary Education				
Biology	8	--	--	8
Certificate	1	17	--	18
Chemistry	1	--	--	1
Computer Science	1	1	--	2
English	15	--	--	15
French	1	--	--	1
History	9	1	--	10
Mathematics	24	--	--	24
Physics	2	1	--	3
Social Science	6	1	--	7
Curriculum & Instruction	--	--	9	9
Early Child Care	7	8	--	15
Educational Leadership	--	--	33	33
Elementary Education-Certificate	1	7	--	8
Elementary Education-Degree	99	16	--	115
Human Services Counseling	--	--	35	35
Physical Education	24	1	--	25
Reading & Learning Disabilities	--	--	47	47
Undecided	58	26	22	106
Subtotal	257	79	146	482

(continued)

Table 1.8 (continued)

	Day	Evening	Graduate	Total
School for New Learning	--	675	41	716

Theatre School				

Acting	145	--	36	181
Costume Construction	1	--	--	1
Costume Design	3	--	1	4
Directing	--	--	7	7
Lighting Design	5	--	--	5
Production	3	--	--	3
Scenic Design	4	--	1	5
Theatre Arts	11	--	--	11
Theatre Technology	7	--	--	7
Undecided	1	--	1	2
Subtotal	180	--	46	226
School of Music				

Composition	6	--	6	12
Education	19	--	9	28
Jazz Studies	8	--	--	8
Music Business	4	--	--	4
Performance	28	--	34	62
Theory	7	--	--	7
Therapy	7	--	--	7
Undecided	172	--	4	176
Subtotal	251	--	53	304
College of Law				

Health Law	--	6	--	6
Juris Doctor	638	236	--	874
Business Law	1	--	--	1
Taxation	--	--	86	86
Undecided	--	4	--	4
Subtotal	639	246	86	971
TOTAL	6,067	3,207	4,414	13,688

*CICS, Computer Career Program, English Language Institute, Executive Career Program, Telecommunications, and Early Child Care are certificate programs. The remaining programs can lead to a degree.

Graph 4

University Racial Distribution Fall 1983 - Fall 1987

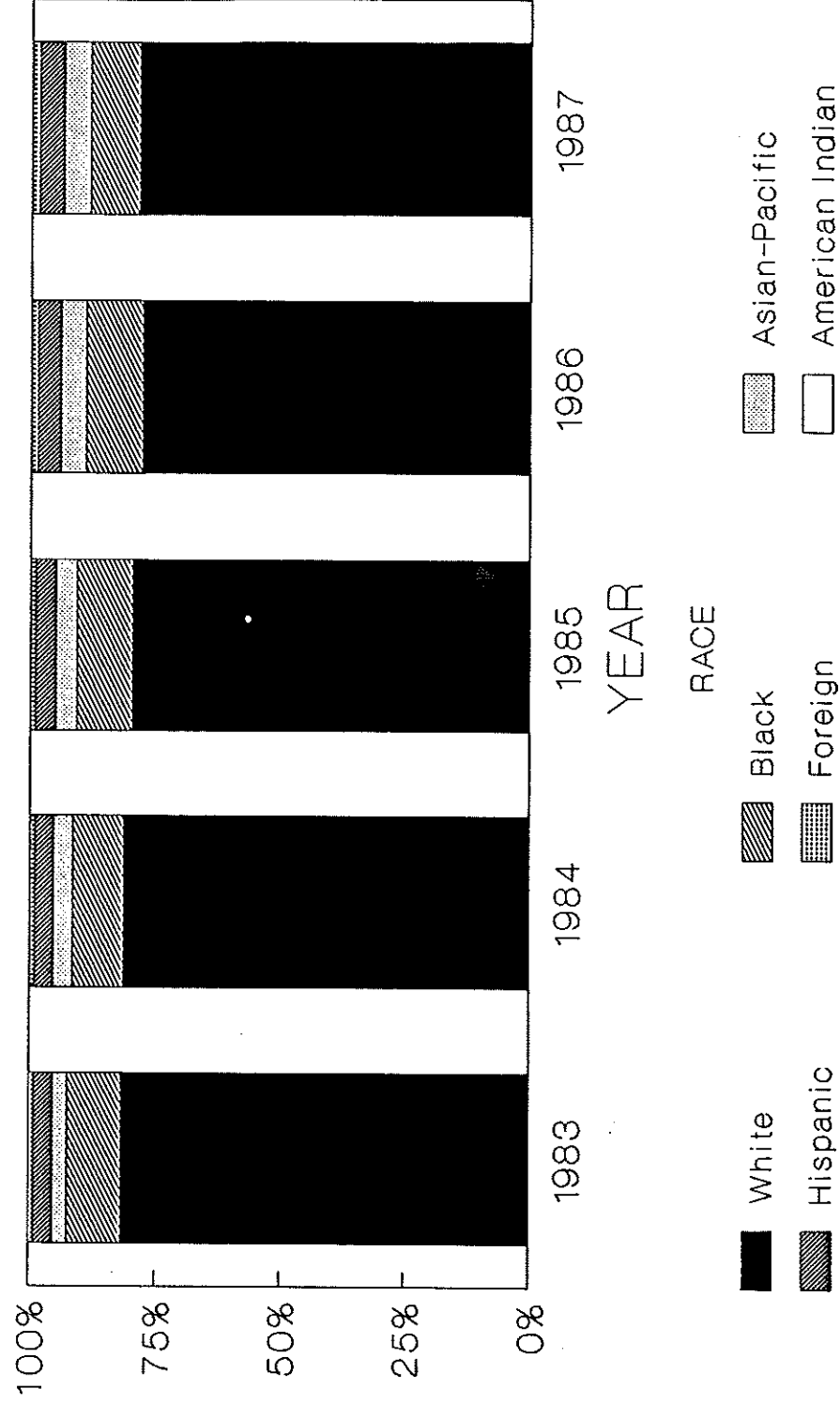


Table 2.1

Racial Distribution By Level
Fall 1983 - Fall 1987

	1983	1984	1985	1986	1987
	----	----	----	----	----
	%	%	%	%	%
Undergraduate					

American Indian	0.2	0.2	0.2	0.3	0.3
Black	14.3	13.7	14.9	15.0	13.3
Asian-Pacific	2.9	3.8	4.0	4.5	4.8
Hispanic	4.6	5.0	5.4	6.2	6.5
Foreign	0.6	0.8	0.8	1.0	1.0
White	77.5	76.5	74.7	73.0	74.1
Graduate					

American Indian	0.1	0.1	0.0	0.1	0.1
Black	4.8	4.5	4.8	6.0	4.3
Asian-Pacific	4.0	4.6	5.6	6.5	7.0
Hispanic	2.2	1.9	1.7	1.8	2.1
Foreign	1.8	1.4	1.2	1.9	2.5
White	87.1	87.5	86.7	83.7	84.0
Professional					

American Indian	0.0	0.0	0.2	0.2	0.1
Black	3.8	5.1	5.1	4.1	3.6
Asian-Pacific	0.9	0.9	1.8	2.2	1.9
Hispanic	2.2	2.1	2.6	3.0	3.1
Foreign	0.1	0.1	0.1	0.3	0.2
White	93.0	91.9	90.2	90.2	91.1
University Total					

American Indian	0.1	0.2	0.2	0.2	0.2
Black	10.6	10.0	10.9	11.3	9.8
Asian-Pacific	3.0	3.8	4.3	5.0	5.3
Hispanic	3.7	3.7	4.0	4.6	4.8
Foreign	0.9	0.9	0.9	1.2	1.4
White	81.6	81.3	79.8	77.7	78.5
Number of Students	12,447	12,326	12,836	13,132	13,688

Source: Enrollment Statistics Tape
IBHE Fall Enrollment Survey

OIPR 12-87

Table 2.2

Racial Distribution by College
Fall 1983 - Fall 1987

	1983	1984	1985	1986	1987
-----	---	---	---	---	---
	%	%	%	%	%
Undergraduate					
LA & S - Day					
American Indian	0.2	0.3	0.3	0.3	0.3
Black	14.4	15.9	17.4	16.7	15.3
Asian-Pacific	3.9	5.2	6.2	6.3	5.8
Hispanic	6.7	6.5	6.0	6.9	7.0
Foreign	0.7	1.1	1.0	1.6	1.9
White	74.1	71.1	69.2	68.2	69.7
Theatre School					
American Indian	1.0	0.6	0.0	0.0	0.6
Black	5.2	9.3	10.3	6.3	7.2
Asian-Pacific	0.5	1.9	1.9	1.4	1.1
Hispanic	2.1	2.5	1.9	2.5	1.7
Foreign	0.5	1.2	0.0	0.0	0.6
White	90.7	84.6	85.8	89.8	88.8
LA & S - Evening					
American Indian	0.1	0.6	0.2	0.2	0.1
Black	24.5	20.6	22.2	23.8	20.0
Asian-Pacific	4.7	6.2	5.4	6.8	5.3
Hispanic	4.1	5.1	5.0	6.1	4.4
Foreign	0.3	0.3	0.8	1.2	0.6
White	66.4	67.3	66.4	61.9	69.6
SNL					
American Indian	0.4	0.2	0.0	0.4	0.6
Black	18.5	15.9	15.4	12.3	11.4
Asian-Pacific	0.8	1.2	1.2	0.6	1.2
Hispanic	2.5	3.0	3.1	3.4	3.4
Foreign	0.6	0.2	0.4	0.0	0.0
White	77.2	79.5	79.9	83.3	83.4
Music					
American Indian	0.0	0.3	0.0	0.0	0.0
Black	5.6	6.2	5.6	4.9	4.0
Asian-Pacific	2.6	2.8	4.2	6.1	7.5
Hispanic	1.5	1.4	1.0	1.9	1.6
Foreign	0.4	1.0	2.1	1.2	1.2
White	89.9	88.2	87.1	85.9	85.7
Commerce - Day					
American Indian	0.1	0.0	0.2	0.3	0.2
Black	7.5	8.5	9.9	10.7	9.6
Asian-Pacific	2.1	2.9	3.2	4.3	6.1
Hispanic	4.6	4.7	6.3	7.2	7.6
Foreign	0.9	1.0	0.9	1.1	1.2
White	84.9	82.9	79.5	76.4	75.3

(continued)

Table 2.2 (continued)

	1983	1984	1985	1986	1987
	----	----	----	----	----
	%	%	%	%	%
Commerce - Evening					
American Indian	0.1	0.1	0.2	0.1	0.1
Black	13.5	12.8	15.1	17.3	15.8
Asian-Pacific	2.3	3.0	2.7	3.2	3.2
Hispanic	3.4	4.3	5.1	5.8	6.8
Foreign	0.3	0.5	0.4	0.2	0.2
White	80.5	79.3	76.5	73.4	73.9
Education - Day					
American Indian	0.7	0.0	1.1	0.9	0.4
Black	17.3	15.6	13.6	11.0	12.1
Asian-Pacific	0.7	0.7	0.6	0.9	0.7
Hispanic	6.5	6.8	6.2	7.8	7.8
Foreign	0.7	1.4	0.6	0.0	0.0
White	74.1	75.5	78.0	79.4	79.0
Education - Evening					
American Indian	0.0	0.0	0.0	0.0	1.3
Black	37.9	22.7	26.8	28.4	20.2
Asian-Pacific	0.0	1.5	2.8	4.5	1.3
Hispanic	6.8	9.1	8.5	6.0	20.2
Foreign	0.0	0.0	0.0	1.4	0.0
White	55.3	66.7	62.0	59.7	57.0
Graduate					

LA & S					
American Indian	0.1	0.2	0.1	0.1	0.0
Black	10.0	8.4	9.9	10.2	8.7
Asian-Pacific	9.8	10.5	12.3	13.9	16.0
Hispanic	1.7	1.9	2.3	2.5	2.4
Foreign	5.0	3.5	3.1	4.7	6.0
White	73.4	75.4	72.4	68.6	66.9
Music					
American Indian	0.0	0.0	0.0	0.0	0.0
Black	9.1	9.7	3.3	4.2	3.8
Asian-Pacific	1.5	3.2	5.0	8.3	3.8
Hispanic	1.5	0.0	3.3	0.0	0.0
Foreign	3.0	1.6	0.0	0.0	0.0
White	84.9	85.5	88.3	87.5	92.4
Commerce					
American Indian	0.2	0.1	0.0	0.0	0.1
Black	1.9	1.8	1.9	1.9	1.9
Asian-Pacific	1.5	1.9	2.2	2.5	2.4
Hispanic	1.5	1.2	0.9	0.9	1.2
Foreign	0.4	0.5	0.2	0.3	0.7
White	94.5	94.5	94.7	94.4	93.7
Education					
American Indian	0.0	0.0	0.0	0.0	0.0
Black	11.4	13.4	6.9	21.9	8.9
Asian-Pacific	1.6	0.7	0.6	2.1	1.4
Hispanic	21.1	13.4	8.8	6.2	15.8
Foreign	1.6	0.7	0.0	1.2	2.7
White	64.2	71.8	83.6	68.6	71.2

Table 2.2 (continued)

	1983	1984	1985	1986	1987
	----	----	----	----	----
	%	%	%	%	%
Theatre School					
American Indian	0.0	0.0	0.0	2.2	2.2
Black	0.0	3.4	2.3	0.0	2.2
Asian-Pacific	0.0	0.0	0.0	0.0	0.0
Hispanic	0.0	0.0	0.0	0.0	0.0
Foreign	0.0	0.0	0.0	2.2	0.0
White	100.0	96.6	97.7	95.6	95.6
School for New Learning					
American Indian	--	--	0.0	0.0	0.0
Black	--	--	0.0	8.3	2.4
Asian-Pacific	--	--	0.0	0.0	4.9
Hispanic	--	--	0.0	4.2	2.4
Foreign	--	--	0.0	0.0	0.0
White	--	--	100.0	87.5	90.3
Law - Day					
American Indian	0.0	0.0	0.1	0.3	0.2
Black	3.1	3.4	3.9	2.8	2.5
Asian-Pacific	0.7	1.1	1.3	1.6	0.9
Hispanic	2.0	2.1	3.0	3.6	3.3
Foreign	0.0	0.0	0.0	0.3	0.2
White	94.2	93.3	91.6	91.4	92.9
Law - Evening					
American Indian	0.0	0.0	0.3	0.0	0.0
Black	5.2	7.1	7.3	6.5	5.7
Asian-Pacific	1.2	0.7	2.5	3.4	3.6
Hispanic	2.8	1.9	2.0	2.0	2.7
Foreign	0.3	0.2	0.3	0.3	0.3
White	90.5	90.1	87.8	87.8	87.7
University Total					
American Indian	0.1	0.2	0.2	0.2	0.2
Black	10.6	10.0	10.9	11.3	9.8
Asian-Pacific	3.1	3.8	4.3	5.0	5.3
Hispanic	3.7	3.7	4.0	4.6	4.8
Foreign	0.9	0.9	0.9	1.2	1.4
White	81.6	81.3	79.8	77.7	78.5

Source: Enrollment Statistics Tape

OIPR 12-87

Table 2.3
Sex Distribution by Level
Fall 1983 - Fall 1987

Level	1983		1984		1985		1986		1987	
	Male	Female	Male	Female	Male	Female	Male	Female	Male	Female
	%	%	%	%	%	%	%	%	%	%
Undergraduate	45.6	54.4	45.9	54.1	44.7	55.3	44.3	55.7	43.4	56.6
Graduate	60.6	39.4	60.4	39.6	59.8	40.2	58.9	41.1	60.1	39.9
Professional	62.6	37.4	62.2	37.8	62.8	37.2	62.4	37.6	62.0	38.0
University	51.5	48.5	51.9	48.1	51.0	49.0	50.3	49.7	50.0	50.0

Source: Registrar's Report

OIPR 12-87

Graph 5

Sex Distribution By College Fall 1987

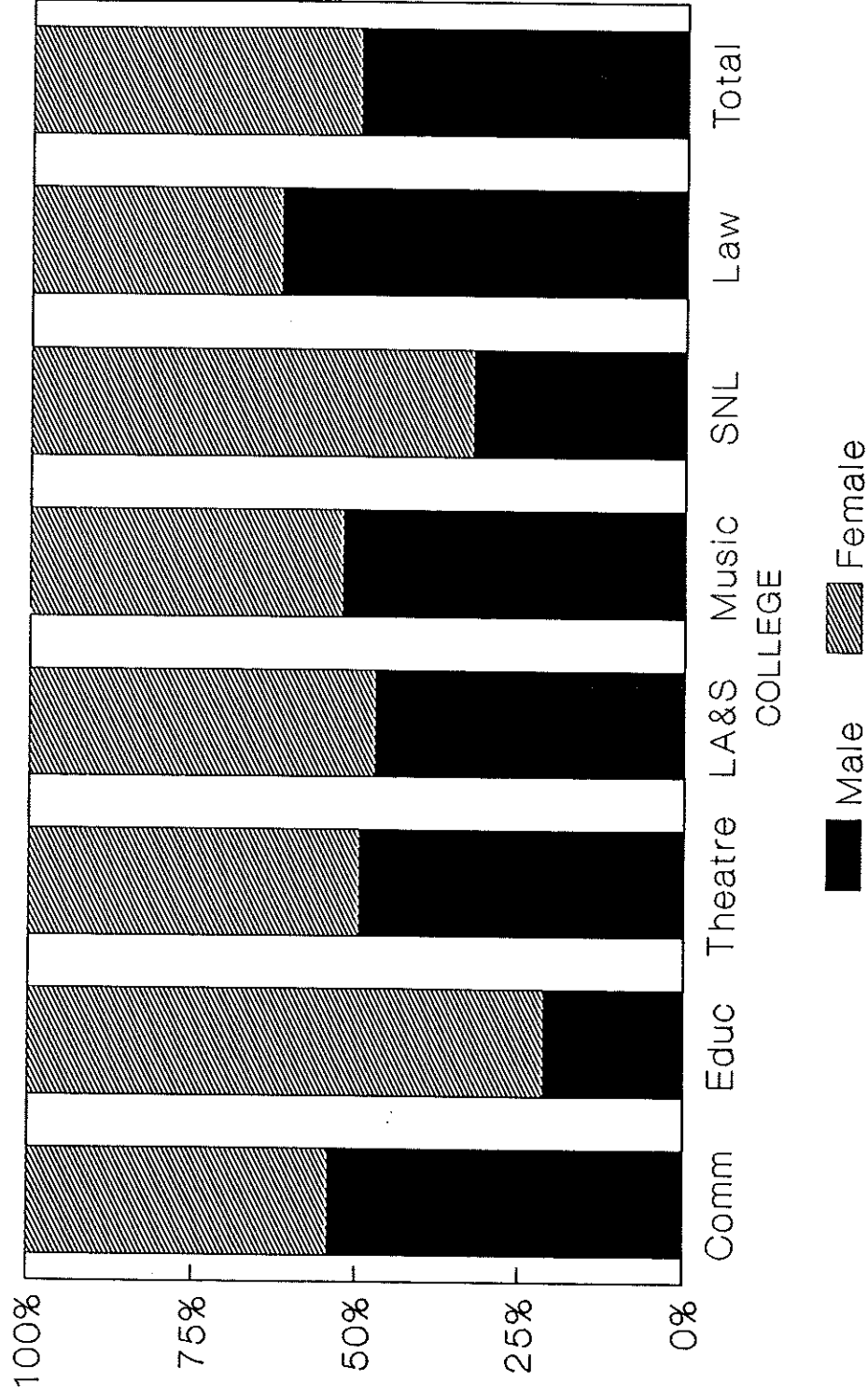


Table 2.4

Sex Distribution by College
Fall 1983 - Fall 1987

Undergraduate	1983	1984	1985	1986	1987
-----	----	----	----	----	----
Commerce - Day					
Male	1,015	1,010	1,177	1,311	1,362
Female	789	834	965	1,103	1,228
Total	1,804	1,844	2,142	2,414	2,590
Commerce - Evening					
Male	616	573	524	550	533
Female	809	732	757	766	792
Total	1,425	1,305	1,281	1,316	1,325
Education - Day					
Male	24	35	42	55	54
Female	115	112	135	163	203
Total	139	147	177	218	257
Education - Evening					
Male	20	18	13	14	13
Female	83	48	58	53	66
Total	103	66	71	67	79
Theatre School					
Male	99	77	73	78	86
Female	94	85	82	81	94
Total	193	162	155	159	180
LA & S - Day					
Male	875	856	806	779	878
Female	1,137	1,126	1,143	1,155	1,272
Total	2,012	1,982	1,949	1,934	2,150
LA & S - Evening					
Male	569	513	512	449	381
Female	701	576	622	604	501
Total	1,270	1,089	1,134	1,053	882
Music					
Male	129	151	146	140	132
Female	139	139	141	123	119
Total	268	290	287	263	251
School for New Learning					
Male	161	154	156	160	206
Female	319	340	362	392	469
Total	480	494	518	552	675
Undergraduate Subtotal					
Male	3,508	3,387	3,449	3,536	3,645
Female	4,186	3,992	4,265	4,440	4,744
Total	7,694	7,379	7,714	7,976	8,389

(continued)

Table 2.4 (continued)

Graduate	1983	1984	1985	1986	1987

Commerce					
Male	1,474	1,528	1,565	1,484	1,635
Female	813	818	846	862	968
Total	2,287	2,346	2,411	2,346	2,603
Education					
Male	24	24	24	52	35
Female	99	119	135	190	111
Total	123	143	159	242	146
Theatre School					
Male	9	11	17	25	26
Female	16	18	26	20	20
Total	25	29	43	45	46
LA & S					
Male	641	708	776	852	852
Female	464	533	590	605	587
Total	1,105	1,241	1,366	1,457	1,439
Music					
Male	36	36	33	27	27
Female	30	26	27	21	26
Total	66	62	60	48	53
School for New Learning					
Male	--	--	7	13	26
Female	--	--	6	11	15
Total	--	--	13	24	41
Graduate Subtotal					
Male	2,184	2,307	2,422	2,453	2,601
Female	1,422	1,514	1,630	1,709	1,727
Total	3,606	3,821	4,052	4,162	4,328
Law					

Law - Day					
Male	421	417	405	390	390
Female	283	289	265	252	249
Total	704	706	670	642	639
Law - Evening					
Male	297	283	267	230	212
Female	146	137	133	122	120
Total	443	420	400	352	332
Law Subtotal					
Male	718	700	672	620	602
Female	429	426	398	374	369
Total	1,147	1,126	1,070	994	971
University					

Male	6,410	6,394	6,543	6,609	6,848
Female	6,037	5,932	6,293	6,523	6,840
Total	12,447	12,326	12,836	13,132	13,688

Table 2.5

Sex Distribution by College by Race
Fall 1983 - Fall 1987

	1983		1984		1985		1986		1987	
	Male %	Female %	Male %	Female %	Male %	Female %	Male %	Female %	Male %	Female %
Commerce - Day										
American Indian	0.1	0.0	0.0	0.0	0.2	0.3	0.2	0.5	0.1	0.3
Black	4.0	11.9	5.0	12.7	5.7	15.0	6.6	15.6	5.4	14.4
Asian-Pacific	1.5	2.9	1.8	4.3	2.4	4.1	3.1	5.8	4.5	7.8
Hispanic	3.3	6.1	3.6	6.1	5.5	7.4	5.9	8.5	6.1	9.3
Foreign	1.0	0.9	1.1	0.8	0.9	0.8	1.4	0.8	1.2	1.1
White	90.0	78.2	88.5	76.0	85.3	72.3	82.8	68.8	82.7	67.1
Commerce - Evening										
American Indian	0.0	0.1	0.0	0.1	0.2	0.3	0.2	0.0	0.2	0.1
Black	10.4	15.8	10.3	14.8	9.0	19.3	11.8	21.3	10.9	19.2
Asian-Pacific	1.8	2.6	1.9	3.8	2.7	2.8	2.5	3.6	3.7	2.8
Hispanic	2.6	4.1	4.9	3.8	5.4	4.9	5.5	6.0	6.2	7.2
Foreign	0.7	0.0	0.9	0.1	0.4	0.4	0.4	0.0	0.5	0.0
White	84.5	77.4	82.0	77.2	82.4	72.4	79.6	69.1	78.6	70.7
Commerce - Graduate										
American Indian	0.1	0.2	0.1	0.1	0.0	0.1	0.0	0.1	0.1	0.1
Black	2.0	1.7	1.8	1.8	1.6	2.4	1.5	2.5	1.1	3.3
Asian-Pacific	1.4	1.7	1.7	2.3	1.8	3.1	2.1	3.1	1.9	3.4
Hispanic	1.3	1.8	1.0	1.7	0.6	1.4	0.7	1.3	1.1	1.3
Foreign	0.5	0.1	0.5	0.4	0.3	0.1	0.3	0.5	0.8	0.5
White	94.7	94.5	94.9	93.6	95.7	92.9	95.4	92.5	95.0	91.4
Education - Day										
American Indian	0.0	0.9	0.0	0.0	0.0	1.5	1.8	0.6	0.0	0.5
Black	20.8	16.5	22.9	13.4	19.0	11.9	9.1	11.7	9.2	12.8
Asian-Pacific	0.0	0.9	0.0	0.9	0.0	0.7	0.0	1.2	0.0	1.0
Hispanic	4.2	7.0	8.6	6.3	9.5	5.2	9.1	7.4	5.6	8.4
Foreign	0.0	0.9	0.0	1.8	0.0	0.7	0.0	0.0	0.0	0.0
White	75.0	73.9	68.6	77.7	71.4	79.9	80.0	79.1	85.2	77.3
Education - Evening										
American Indian	0.0	0.0	0.0	0.0	0.0	0.0	0.0	0.0	7.7	0.0
Black	45.0	36.1	22.2	22.9	30.8	25.9	35.7	26.4	23.1	19.7
Asian-Pacific	0.0	0.0	5.6	0.0	7.7	1.7	7.1	3.8	0.0	1.5
Hispanic	0.0	8.4	0.0	12.5	0.0	10.3	0.0	7.5	0.0	24.3
Foreign	0.0	0.0	0.0	0.0	0.0	0.0	0.0	1.9	0.0	0.0
White	55.0	55.4	72.2	64.6	61.5	62.1	57.2	60.4	69.2	54.5
Education - Graduate										
American Indian	0.0	0.0	0.0	0.0	0.0	0.0	0.0	0.0	0.0	0.0
Black	4.2	13.1	0.0	16.1	0.0	8.1	9.6	25.3	2.9	10.8
Asian-Pacific	4.2	1.1	0.0	0.8	0.0	0.7	0.0	2.6	2.9	0.9
Hispanic	8.3	24.2	4.2	15.3	16.7	7.4	5.8	6.3	10.3	17.1
Foreign	8.3	0.0	4.2	0.0	0.0	0.0	3.8	0.5	8.6	0.9
White	75.0	61.6	91.7	67.8	83.3	83.7	80.8	65.3	74.3	70.3
Theatre - Undergraduate										
American Indian	1.0	1.1	1.3	0.0	0.0	0.0	0.0	0.0	0.0	1.1
Black	5.1	5.3	10.4	8.2	8.2	12.2	5.1	7.4	8.1	6.4
Asian-Pacific	0.0	1.1	1.3	2.4	0.0	3.7	0.0	2.5	0.0	2.1
Hispanic	3.0	1.1	3.9	1.2	2.7	1.2	3.8	1.2	1.2	2.1
Foreign	0.0	1.1	0.0	2.4	0.0	0.0	0.0	0.0	1.2	0.0

Table 2.5 (continued)

	1983		1984		1985		1986		1987	
	Male %	Female %	Male %	Female %	Male %	Female %	Male %	Female %	Male %	Female %
Theatre - Graduate										
American Indian	0.0	0.0	0.0	0.0	0.0	0.0	4.0	0.0	3.8	0.0
Black	0.0	0.0	0.0	5.6	0.0	4.0	0.0	0.0	3.8	0.0
Asian-Pacific	0.0	0.0	0.0	0.0	0.0	0.0	0.0	0.0	0.0	0.0
Hispanic	0.0	0.0	0.0	0.0	0.0	0.0	0.0	0.0	0.0	0.0
Foreign	0.0	0.0	0.0	0.0	0.0	0.0	4.0	0.0	0.0	0.0
White	100.0	100.0	100.0	94.4	100.0	96.0	92.0	100.0	92.4	100.0
L A & S - Day										
American Indian	0.2	0.2	0.4	0.2	0.0	0.4	0.1	0.3	0.0	0.5
Black	8.4	19.0	9.3	20.8	11.6	21.5	11.0	20.5	10.6	18.6
Asian-Pacific	4.2	3.7	4.9	5.5	5.6	6.6	5.0	7.1	5.4	6.1
Hispanic	7.3	6.3	6.1	6.8	6.2	5.9	6.9	6.9	7.2	6.8
Foreign	0.6	0.8	1.1	1.1	1.1	0.9	1.9	1.6	2.4	1.6
White	79.3	70.1	78.3	65.6	75.5	64.7	75.1	63.6	74.4	66.4
L A & S - Evening										
American Indian	0.2	0.0	0.8	0.3	0.2	0.2	0.0	0.3	0.0	0.2
Black	16.6	30.8	16.9	23.8	16.9	26.6	20.0	26.7	14.2	24.3
Asian-Pacific	5.5	4.0	7.5	5.0	5.1	5.6	9.6	4.6	8.1	3.2
Hispanic	4.8	3.6	5.9	4.3	4.3	5.6	5.3	6.6	4.2	4.6
Foreign	0.5	0.1	0.4	0.2	0.6	1.0	1.6	1.0	0.8	0.4
White	72.4	61.5	68.6	66.3	72.9	61.1	63.5	60.8	72.7	67.3
L A & S - Graduate										
American Indian	0.0	0.2	0.3	0.2	0.1	0.0	0.1	0.2	0.0	0.0
Black	7.8	13.0	7.1	10.1	8.8	11.4	8.2	12.9	6.1	12.5
Asian-Pacific	10.9	8.2	11.3	9.4	12.9	11.5	15.0	12.2	16.1	16.0
Hispanic	1.7	1.7	2.3	1.5	2.7	1.7	2.7	2.1	3.1	1.5
Foreign	5.9	3.7	3.4	3.8	2.8	3.4	4.6	5.0	6.9	4.6
White	73.6	73.2	75.7	75.0	72.7	72.0	69.4	67.6	67.8	65.4
Law - Day										
American Indian	0.0	0.0	0.0	0.0	0.2	0.0	0.4	0.0	0.0	0.4
Black	1.4	5.7	1.9	5.5	2.2	6.4	1.3	5.2	1.8	3.6
Asian-Pacific	0.5	1.1	0.7	1.7	1.0	1.9	1.3	2.0	0.8	1.2
Hispanic	1.0	3.5	1.4	3.1	2.2	4.2	2.3	5.5	2.8	4.0
Foreign	0.0	0.0	0.0	0.0	0.0	0.0	0.3	0.4	0.0	0.4
White	97.1	89.8	95.9	89.6	94.3	87.5	94.4	86.9	94.6	90.4
Law - Evening										
American Indian	0.0	0.0	0.0	0.0	0.0	0.8	0.0	0.0	0.0	0.0
Black	3.7	6.2	5.7	10.2	5.2	11.3	5.7	8.2	4.7	7.5
Asian-Pacific	1.7	1.4	0.7	0.7	3.0	1.5	4.7	0.8	4.7	1.7
Hispanic	2.4	2.7	2.1	1.5	1.1	3.8	2.2	1.6	2.8	2.5
Foreign	0.3	0.0	0.4	0.0	0.4	0.0	0.0	0.8	0.0	0.8
White	91.9	89.7	91.2	87.6	90.3	82.7	87.4	88.6	87.8	87.5
Music - Undergraduate										
American Indian	0.0	0.0	0.7	0.0	0.0	0.0	0.0	0.0	0.0	0.0
Black	7.8	3.6	7.9	4.3	6.8	4.3	5.0	4.9	4.5	3.4
Asian-Pacific	3.1	2.2	3.3	2.2	4.1	4.3	5.7	6.5	6.8	8.4
Hispanic	2.3	0.7	2.0	0.7	1.4	0.7	2.9	0.8	0.8	2.5
Foreign	0.8	0.0	2.0	0.0	2.1	2.1	1.4	0.8	1.5	0.8
White	86.0	93.5	84.1	92.8	85.6	88.6	85.0	87.0	86.4	84.9

Table 2.5 (continued)

	1983		1984		1985		1986		1987	
	Male %	Female %	Male %	Female %	Male %	Female %	Male %	Female %	Male %	Female %
Music - Graduate										
American Indian	0.0	0.0	0.0	0.0	0.0	0.0	0.0	0.0	0.0	0.0
Black	11.1	6.7	11.1	7.7	6.1	0.0	7.4	0.0	3.7	3.8
Asian-Pacific	2.8	0.0	2.8	3.8	6.1	3.7	7.4	9.5	0.0	7.7
Hispanic	2.8	0.0	0.0	0.0	6.1	0.0	0.0	0.0	0.0	0.0
Foreign	2.8	3.3	2.8	0.0	0.0	0.0	0.0	0.0	0.0	0.0
White	80.6	90.0	83.3	88.5	81.8	96.3	85.2	90.5	96.3	88.5
SNL - Undergraduate										
American Indian	0.6	0.3	0.0	0.3	0.0	0.0	1.3	0.0	1.9	0.0
Black	14.5	20.4	12.4	17.4	12.3	16.9	8.1	14.0	9.3	12.3
Asian-Pacific	0.6	0.9	1.3	1.2	1.3	1.1	0.6	0.5	1.9	0.9
Hispanic	1.3	3.1	1.3	3.8	0.6	4.1	1.9	4.1	3.9	3.2
Foreign	1.3	0.3	0.7	0.0	1.3	0.0	0.0	0.0	0.0	0.0
White	81.8	74.8	84.3	77.3	84.5	77.9	88.1	81.4	83.0	13.6
SNL - Graduate										
American Indian	--	--	--	--	0.0	0.0	0.0	0.0	0.0	0.0
Black	--	--	--	--	0.0	0.0	7.7	9.1	3.9	0.0
Asian-Pacific	--	--	--	--	0.0	0.0	0.0	0.0	7.7	0.0
Hispanic	--	--	--	--	0.0	0.0	0.0	9.1	3.9	0.0
Foreign	--	--	--	--	0.0	0.0	0.0	0.0	0.0	0.0
White	--	--	--	--	100.0	100.0	92.3	81.8	84.6	100.0

Source: Enrollment Statistics Tape

OIPR 12-87

Table 2.6

Age Distribution by Level
Fall 1983 - Fall 1987

	1983	1984	1985	1986	1987
	-----	-----	-----	-----	-----
	%	%	%	%	%
Undergraduate					

under 24	59.8	59.8	60.9	60.7	59.3
24 - 29	22.0	21.5	20.9	20.8	21.5
30 - 44	16.3	16.8	16.4	16.6	17.0
45 and over	1.9	1.8	1.9	1.9	2.2
Graduate					

under 24	10.1	10.1	9.8	8.0	8.7
24 - 29	53.5	51.9	50.7	50.8	52.4
30 - 44	33.5	34.9	36.2	36.7	36.0
45 and over	2.9	3.1	3.3	4.5	2.9
Law					

under 24	34.5	32.4	25.1	27.0	28.9
24 - 29	46.1	47.5	48.1	47.2	44.8
30 - 44	18.3	19.0	24.7	24.1	24.9
45 and over	1.2	1.1	2.1	1.7	1.4
University Total					

under 24	41.4	40.2	42.5	41.4	41.2
24 - 29	33.9	34.0	31.2	32.4	32.9
30 - 44	22.5	23.6	23.5	23.5	23.6
45 and over	2.2	2.2	2.8	2.7	2.3

Source: Enrollment Statistics Tape

OIPR 12-87

Table 2.7

Age Distribution by College
Fall 1983 - Fall 1987

College	1983	1984	1985	1986	1987
-----	----	----	----	----	----
	%	%	%	%	%
Commerce - Day					
under 24	89.0	88.3	88.4	85.7	85.6
24 - 29	8.7	9.2	8.6	11.0	10.9
30 - 44	2.3	2.5	2.9	3.1	3.4
45 and over	0.1	0.1	0.1	0.2	0.1
Commerce - Evening					
under 24	26.0	25.5	26.6	28.1	21.7
24 - 29	43.6	43.0	45.1	42.7	46.6
30 - 44	29.3	29.9	26.3	27.3	30.0
45 and over	1.1	1.6	2.0	1.9	1.7
Commerce - Graduate					
under 24	10.4	11.0	9.9	7.4	8.0
24 - 29	58.2	57.3	58.8	60.9	59.5
30 - 44	29.8	30.4	30.2	30.7	31.4
45 and over	1.7	1.4	1.0	1.0	1.1
Education - Day					
under 24	81.2	83.7	87.6	88.1	84.8
24 - 29	12.3	8.8	7.9	7.8	9.7
30 - 44	6.5	7.5	4.5	4.1	5.1
45 and over	0.0	0.0	0.0	0.0	0.4
Education - Evening					
under 24	37.9	36.4	37.1	34.3	21.5
24 - 29	36.9	30.3	41.4	40.3	40.5
30 - 44	17.5	22.7	18.6	19.4	25.3
45 and over	7.8	10.6	2.9	6.0	12.7
Education - Graduate					
under 24	3.3	5.6	7.0	2.1	4.8
24 - 29	35.8	31.5	27.4	20.5	32.2
30 - 44	51.2	47.6	47.8	48.1	47.2
45 and over	9.8	15.4	17.8	29.3	15.8
Theatre - Undergraduate					
under 24	91.7	87.0	89.7	87.4	91.1
24 - 29	6.8	9.3	9.7	11.3	7.2
30 - 44	1.0	3.1	0.6	1.3	1.1
45 and over	0.5	0.6	0.0	0.0	0.6
Theatre - Graduate					
under 24	36.0	21.4	37.2	24.4	30.5
24 - 29	60.0	53.6	51.2	55.6	56.5
30 - 44	4.0	25.0	11.6	20.0	13.0
45 and over	0.0	0.0	0.0	0.0	0.0
L A & S - Day					
under 24	83.2	81.8	82.9	80.4	78.5
24 - 29	10.9	12.3	11.3	13.5	14.5
30 - 44	5.3	5.3	5.5	5.8	6.3
45 and over	0.7	0.7	0.3	0.3	0.7

Table 2.7 (continued)

	1983	1984	1985	1986	1987
	----	----	----	----	----
	%	%	%	%	%
L A & S - Evening					
under 24	30.8	27.7	24.5	25.6	18.4
24 - 29	38.8	39.5	38.6	34.9	39.5
30 - 44	27.4	29.9	33.6	36.6	38.8
45 and over	3.0	2.9	3.3	2.9	3.3
L A & S - Graduate					
under 24	9.4	8.6	8.2	8.7	8.8
24 - 29	47.0	45.1	39.3	40.2	42.8
30 - 44	38.7	41.3	46.7	45.0	44.0
45 and over	4.9	5.0	5.8	6.1	4.4
Law - Day					
under 24	45.6	42.5	38.5	38.5	41.0
24 - 29	44.8	47.3	50.0	49.1	46.6
30 - 44	9.0	9.5	10.6	11.8	12.2
45 and over	0.6	0.7	0.9	0.6	0.2
Law - Evening					
under 24	7.9	6.5	2.8	6.0	5.1
24 - 29	47.8	46.4	45.0	43.8	41.3
30 - 44	41.7	44.3	48.3	46.6	50.0
45 and over	2.5	2.9	4.0	3.6	3.6
Music - Undergraduate					
under 24	84.5	81.7	80.7	79.4	84.4
24 - 29	11.3	11.1	9.8	13.4	8.0
30 - 44	4.2	7.3	8.4	6.1	6.8
45 and over	0.0	0.0	1.1	1.1	0.8
Music - Graduate					
under 24	28.8	31.1	31.7	33.3	26.4
24 - 29	50.0	50.8	53.3	39.6	50.9
30 - 44	18.2	18.0	13.3	25.0	20.8
45 and over	3.0	0.0	1.7	2.1	1.9
SNL - Undergraduate					
under 24	1.1	0.8	1.0	0.9	1.3
24 - 29	21.8	21.1	21.1	20.5	22.5
30 - 44	63.3	66.1	63.8	64.6	60.9
45 and over	13.8	12.0	14.1	14.0	15.3
SNL - Graduate					
under 24	--	--	0.0	0.0	0.0
24 - 29	--	--	0.0	29.2	12.2
30 - 44	--	--	92.3	58.3	70.7
45 and over	--	--	7.7	12.5	17.1

Source: Enrollment Statistics Tape

OIPR 12-87

Table 2.8

Race by Sex by Age Distribution
Fall 1983 - Fall 1987

	1983		1984		1985		1986		1987	
	Male	Female	Male	Female	Male	Female	Male	Female	Male	Female
	%	%	%	%	%	%	%	%	%	%
American Indian										
under 24	62.5	44.4	50.0	37.5	33.3	53.3	41.7	57.2	30.0	62.5
24 - 29	25.0	33.3	41.7	50.0	16.7	20.0	25.0	21.4	10.0	12.5
30 - 44	12.5	22.2	8.3	12.5	50.0	26.7	33.3	21.4	50.0	25.0
45 and over	0.0	0.0	0.0	0.0	0.0	0.0	0.0	0.0	10.0	0.0
Black										
under 24	42.6	47.3	42.0	46.9	43.8	47.9	40.2	46.3	37.6	43.8
24 - 29	29.3	25.4	30.6	27.1	29.1	24.0	30.8	22.1	31.8	27.7
30 - 44	26.2	23.9	26.7	22.7	26.0	25.0	26.7	26.3	28.6	25.1
45 and over	1.9	3.4	0.7	3.4	1.1	3.1	2.3	5.3	2.0	3.4
Asian-Pacific										
under 24	26.4	38.9	28.8	34.5	27.7	43.8	25.2	48.6	29.4	48.2
24 - 29	34.0	31.1	26.2	27.6	29.2	29.0	32.4	28.7	31.7	32.3
30 - 44	35.5	27.8	42.8	35.6	40.2	26.9	39.9	20.6	36.1	18.1
45 and over	4.1	2.2	2.2	2.4	3.0	0.7	2.5	2.1	2.8	1.4
Hispanic										
under 24	59.3	54.4	51.9	50.4	59.0	57.1	56.2	58.9	52.5	56.6
24 - 29	27.8	27.8	28.6	30.4	26.1	26.8	27.1	21.7	31.4	25.3
30 - 44	12.9	16.7	16.5	17.7	14.0	14.6	16.3	18.0	15.0	17.3
45 and over	0.0	1.1	0.5	1.5	0.9	1.5	0.4	1.4	1.1	0.8
Foreign										
under 24	21.3	18.8	28.8	27.1	32.8	32.7	25.6	31.4	25.6	43.0
24 - 29	45.3	65.2	54.5	58.3	36.2	55.8	51.1	50.0	48.8	38.9
30 - 44	33.3	14.5	16.7	14.6	31.0	9.6	23.3	17.2	25.6	18.1
45 and over	0.0	1.4	0.0	0.0	0.0	1.9	0.0	1.4	0.0	0.0
White										
under 24	42.0	42.3	40.5	41.4	39.7	41.6	39.9	41.0	39.0	42.2
24 - 29	36.0	32.9	36.0	32.2	36.0	31.5	35.1	32.4	35.6	31.5
30 - 44	20.4	22.0	21.9	23.2	22.5	23.5	23.2	23.0	23.5	23.3
45 and over	1.5	2.9	1.6	3.2	1.8	3.3	1.8	3.6	1.9	3.0

Source: Enrollment Statistics Tape

OIPR 12-87

Table 2.9

Current Residence by College
Fall 1983 - Fall 1987

	1983	1984	1985	1986	1987
	----	----	----	----	----
	%	%	%	%	%
Commerce - Day					
Suburban					
North	5.8	6.7	6.7	6.7	6.5
Northwest	7.8	9.4	9.3	8.9	10.3
West	17.6	19.1	17.8	16.2	16.7
Southwest	7.0	6.1	7.1	7.0	7.0
South	3.8	3.9	4.1	4.6	4.6
Total Suburban	42.0	45.2	45.0	43.4	45.1
Chicago					
North	25.8	24.0	23.5	23.9	22.2
Central	10.3	10.7	10.2	10.9	12.4
South	19.8	18.3	18.3	17.5	15.5
Loop	0.9	0.5	0.5	1.4	1.2
Total Chicago	56.8	53.5	52.5	53.7	51.3
Elsewhere in Illinois	0.5	0.7	1.0	1.1	1.1
Other/Unknown	0.8	0.8	1.5	1.7	2.5
Commerce - Evening					
Suburban					
North	6.3	6.4	6.2	6.2	6.7
Northwest	7.2	9.0	9.1	7.3	6.3
West	15.2	13.6	12.3	14.5	13.7
Southwest	6.7	6.5	6.3	7.4	7.2
South	5.1	4.8	6.0	5.6	5.4
Total Suburban	40.5	40.3	40.0	41.0	39.4
Chicago					
North	24.8	23.8	22.6	21.9	23.5
Central	10.7	11.6	13.6	12.2	11.5
South	18.7	18.5	18.3	19.0	19.1
Loop	3.9	4.1	3.3	3.4	3.6
Total Chicago	58.1	58.0	57.8	56.5	57.7
Elsewhere in Illinois	0.8	0.8	1.0	1.3	2.0
Other/Unknown	0.8	0.8	1.0	1.1	0.9
Commerce - Graduate					
Suburban					
North	11.8	11.2	10.4	10.6	14.2
Northwest	17.6	18.3	19.5	19.6	18.4
West	20.6	20.0	21.0	21.2	22.3
Southwest	6.4	6.3	7.1	6.7	6.4
South	4.2	3.9	3.1	2.9	3.3
Total Suburban	60.6	59.7	61.1	61.0	64.5
Chicago					
North	17.9	18.1	17.1	17.0	16.3
Central	9.0	8.0	7.8	8.8	8.9
South	5.6	6.0	5.7	5.2	4.7
Loop	3.9	4.1	4.0	3.8	3.9
Total Chicago	36.4	36.2	34.5	34.7	33.7
Elsewhere in Illinois	1.2	2.8	3.0	2.8	1.8
Other/Unknown	1.7	1.4	1.3	1.5	0.0

(continued)

Table 2.9 (continued)

	1983	1984	1985	1986	1987
	----	----	----	----	----
	%	%	%	%	%
Education - Day					
Suburban					
North	5.8	8.8	5.6	6.0	5.4
Northwest	3.6	8.8	7.9	10.6	10.9
West	10.1	8.8	11.3	11.5	12.1
Southwest	4.3	4.1	5.1	8.3	3.5
South	4.3	2.7	1.7	1.8	2.3
Total Suburban	28.1	33.2	31.6	38.1	34.2
Chicago					
North	29.5	29.9	27.7	25.7	25.3
Central	22.3	16.3	18.1	14.7	21.0
South	18.7	19.0	17.5	15.1	14.8
Loop	0.7	0.7	2.3	0.9	0.4
Total Chicago	71.2	65.9	65.6	56.4	61.5
Elsewhere in Illinois	0.7	0.7	0.6	0.5	1.2
Other/Unknown	0.0	0.0	2.3	5.1	3.1
Education - Evening					
Suburban					
North	3.9	7.6	5.6	6.0	5.1
Northwest	6.8	4.5	7.0	3.0	3.8
West	6.8	9.1	8.5	7.5	6.3
Southwest	1.9	6.1	4.2	1.5	0.0
South	3.9	0.0	2.8	0.0	2.5
Total Suburban	23.3	27.3	28.1	18.0	17.7
Chicago					
North	27.2	27.3	26.8	32.0	24.1
Central	12.6	19.7	18.3	22.4	34.2
South	34.0	25.8	22.5	23.8	19.0
Loop	1.9	0.0	4.2	3.0	3.8
Total Chicago	75.7	72.8	71.8	81.2	81.1
Elsewhere in Illinois	0.0	0.0	0.0	0.0	0.0
Other/Unknown	1.0	0.0	0.0	0.0	1.2
Education - Graduate					
Suburban					
North	11.4	9.8	22.0	12.4	14.4
Northwest	4.1	9.8	9.4	7.4	8.9
West	8.9	11.9	10.1	10.7	12.3
Southwest	5.7	4.9	3.1	2.9	3.4
South	6.5	3.5	3.8	4.5	1.4
Total Suburban	36.6	39.9	48.4	37.9	40.4
Chicago					
North	24.4	21.0	20.8	20.7	19.9
Central	17.1	21.7	18.2	17.0	24.0
South	17.1	13.3	10.7	18.6	13.7
Loop	3.3	1.4	1.3	3.7	1.4
Total Chicago	61.9	57.4	51.0	60.8	58.9
Elsewhere in Illinois	0.8	1.4	0.6	0.4	0.0
Other/Unknown	0.8	1.4	0.0	0.8	0.7

(continued)

Table 2.9 (continued)

	1983	1984	1985	1986	1987
	----	----	----	----	----
	%	%	%	%	%
Theatre - Undergraduate					
Suburban					
North	10.4	7.4	7.7	5.7	6.1
Northwest	8.3	8.6	5.8	6.3	6.1
West	7.3	6.2	6.5	5.7	2.2
Southwest	3.6	1.2	3.2	2.5	2.2
South	1.0	2.5	2.6	1.9	1.7
Total Suburban	30.6	25.9	25.8	22.1	18.3
Chicago					
North	14.0	12.3	18.7	17.6	11.1
Central	27.5	32.7	23.9	23.9	26.7
South	4.7	6.2	3.9	3.8	2.2
Loop	1.0	0.6	3.9	2.5	1.7
Total Chicago	47.2	51.8	50.4	47.8	41.7
Elsewhere in Illinois	4.7	4.9	4.5	3.8	2.8
Other/Unknown	17.6	17.2	19.3	26.4	37.2
Theatre - Graduate					
Suburban					
North	8.0	6.9	4.7	4.4	2.2
Northwest	4.0	6.9	2.3	2.2	0.0
West	0.0	6.9	0.0	0.0	0.0
Southwest	0.0	0.0	2.3	2.2	0.0
South	0.0	0.0	2.3	0.0	0.0
Total Suburban	12.0	20.7	11.6	8.8	2.2
Chicago					
North	28.0	27.6	37.2	33.3	32.6
Central	48.0	24.1	34.9	28.9	43.5
South	0.0	3.4	2.3	2.2	0.0
Loop	0.0	3.4	2.3	2.2	2.2
Total Chicago	76.0	58.5	76.7	66.6	78.3
Elsewhere in Illinois	0.0	0.0	0.0	0.0	0.0
Other/Unknown	12.0	20.7	11.6	24.4	19.5
L A & S - Day					
Suburban					
North	7.1	6.9	6.3	6.2	7.3
Northwest	7.8	8.4	8.1	7.5	8.2
West	13.0	12.5	11.6	12.7	12.7
Southwest	4.1	4.6	4.8	4.4	4.5
South	4.0	4.3	4.5	3.8	3.6
Total Suburban	36.0	36.7	35.3	34.6	36.2
Chicago					
North	27.5	26.9	26.5	25.6	23.1
Central	15.5	15.1	16.1	17.3	18.9
South	17.6	17.5	17.4	16.5	14.6
Loop	1.1	1.2	1.2	1.2	1.6
Total Chicago	61.7	60.7	61.2	60.6	58.1
Elsewhere in Illinois	0.7	1.3	1.7	1.7	2.0
Other/Unknown	1.6	1.3	1.9	3.0	3.7

(continued)

Table 2.9 (continued)

	1983	1984	1985	1986	1987
	----	----	----	----	----
	%	%	%	%	%
L A & S - Evening					
Suburban					
North	6.2	7.1	7.8	6.9	6.6
Northwest	6.9	7.4	7.5	8.7	8.3
West	8.6	8.9	9.7	9.2	11.6
Southwest	4.5	4.6	4.5	3.6	4.3
South	3.5	3.7	2.6	3.8	4.8
Total Suburban	29.7	31.7	32.1	32.2	35.6
Chicago					
North	25.6	26.0	26.8	25.9	26.4
Central	14.6	16.9	14.1	15.5	13.5
South	24.2	21.7	20.5	21.3	18.9
Loop	4.1	2.7	4.3	3.4	3.4
Total Chicago	68.5	67.3	65.7	66.1	62.2
Elsewhere in Illinois	0.9	0.3	1.4	0.9	1.1
Other/Unknown	1.0	0.9	0.8	0.7	1.1
L A & S - Graduate					
Suburban					
North	8.4	9.9	10.4	8.9	9.7
Northwest	9.3	9.0	10.4	10.0	9.2
West	16.1	15.7	16.3	17.8	18.4
Southwest	5.4	5.3	6.0	4.8	5.5
South	2.6	2.8	2.7	2.3	2.0
Total Suburban	41.8	42.7	45.8	43.8	44.9
Chicago					
North	28.7	25.9	26.4	28.6	27.0
Central	12.8	14.4	11.4	10.2	10.8
South	9.0	9.2	8.1	9.7	8.1
Loop	1.8	1.8	2.1	1.7	2.3
Total Chicago	52.3	51.3	48.0	50.3	48.2
Elsewhere in Illinois	1.6	2.7	2.8	2.7	2.9
Other/Unknown	4.2	3.1	3.4	3.2	4.0
Law - Day					
Suburban					
North	14.1	12.5	11.5	12.6	12.2
Northwest	8.9	10.8	12.5	10.9	10.5
West	14.9	12.9	12.8	14.0	13.6
Southwest	3.8	4.7	4.0	3.1	3.0
South	3.8	3.8	3.9	4.0	4.9
Total Suburban	45.5	44.7	44.7	44.6	44.1
Chicago					
North	26.3	27.6	28.1	28.5	28.3
Central	12.2	10.5	9.9	10.0	11.6
South	6.3	6.2	6.6	6.7	5.9
Loop	4.1	3.5	4.9	4.5	5.2
Total Chicago	48.9	47.8	49.5	49.7	51.0
Elsewhere in Illinois	1.0	1.1	1.6	1.7	3.0
Other/Unknown	4.6	6.4	4.2	3.9	1.9

(continued)

Table 2.9 (continued)

	1983	1984	1985	1986	1987
	----	----	----	----	----
	%	%	%	%	%
Law - Evening					
Suburban					
North	12.6	11.0	12.0	11.4	11.7
Northwest	11.1	10.0	10.5	13.1	13.6
West	17.4	19.3	16.7	18.2	14.8
Southwest	3.2	3.6	4.7	5.7	4.8
South	3.6	3.8	4.5	5.1	6.0
Total Suburban	47.9	47.7	48.4	53.5	50.9
Chicago					
North	23.5	18.1	22.7	20.7	20.8
Central	10.4	8.8	7.7	8.8	8.4
South	5.6	8.1	9.0	7.1	8.4
Loop	5.9	8.8	6.0	3.7	4.8
Total Chicago	45.4	43.8	45.4	40.3	42.5
Elsewhere in Illinois	0.9	1.9	2.3	2.6	2.4
Other/Unknown	5.9	6.6	3.8	3.7	4.2
Music - Undergraduate					
Suburban					
North	11.6	11.4	14.3	12.5	10.0
Northwest	8.2	10.0	12.2	9.1	8.4
West	18.3	14.8	15.0	12.5	17.5
Southwest	6.0	4.5	2.8	4.2	4.8
South	7.7	4.1	2.8	3.8	3.6
Total Suburban	51.8	44.8	47.1	42.1	44.2
Chicago					
North	17.9	20.7	22.0	24.7	17.5
Central	10.0	13.1	10.8	13.7	11.2
South	13.5	9.7	6.3	3.8	5.2
Loop	4.4	0.3	1.4	1.1	1.2
Total Chicago	45.8	43.8	40.5	43.3	35.1
Elsewhere in Illinois	0.7	2.1	2.4	3.0	4.4
Other/Unknown	7.5	9.3	10.1	11.4	16.3
Music - Graduate					
Suburban					
North	16.7	8.1	3.3	6.3	9.4
Northwest	6.1	6.5	3.3	8.3	11.3
West	9.1	11.3	11.7	8.3	7.5
Southwest	3.0	3.2	3.3	2.1	1.9
South	4.5	1.6	6.7	4.2	3.8
Total Suburban	39.4	30.7	28.3	29.2	34.0
Chicago					
North	22.7	41.9	38.3	33.3	35.8
Central	15.2	9.7	21.7	29.2	20.8
South	13.6	9.7	5.0	2.1	3.8
Loop	3.0	0.0	1.7	2.1	1.9
Total Chicago	54.5	61.3	66.7	66.7	62.3
Elsewhere in Illinois	3.0	1.6	1.7	2.1	1.9
Other/Unknown	3.0	6.4	3.3	2.1	1.8

(continued)

Table 2.9 (continued)

	1983	1984	1985	1986	1987
	----	----	----	----	----
	%	%	%	%	%
SNL - Undergraduate					
Suburban					
North	8.8	7.7	8.5	8.0	6.7
Northwest	13.1	15.4	15.3	18.3	17.3
West	16.0	14.6	14.9	15.6	18.4
Southwest	6.0	6.7	5.2	5.8	7.9
South	7.7	6.3	6.2	6.3	4.7
Total Suburban	51.6	50.7	50.1	54.0	55.0
Chicago					
North	17.9	18.6	19.7	20.7	20.0
Central	10.0	13.4	11.2	8.7	9.3
South	13.5	11.1	11.2	9.4	9.0
Loop	4.4	4.0	4.4	4.7	3.4
Total Chicago	45.8	47.1	46.5	43.5	41.8
Elsewhere in Illinois	1.5	2.0	3.3	2.0	2.7
Other/Unknown	1.0	0.2	0.2	0.6	0.6
SNL - Graduate					
Suburban					
North	--	--	0.0	4.2	12.2
Northwest	--	--	7.7	20.8	12.2
West	--	--	15.4	4.2	34.1
Southwest	--	--	7.7	0.0	4.9
South	--	--	0.0	4.2	4.9
Total Suburban	--	--	30.8	33.4	68.3
Chicago					
North	--	--	38.5	20.8	19.5
Central	--	--	7.7	12.5	2.4
South	--	--	15.4	25.0	2.4
Loop	--	--	7.7	0.0	0.0
Total Chicago	--	--	69.3	58.3	24.4
Elsewhere in Illinois	--	--	0.0	8.3	7.3
Other/Unknown	--	--	0.0	0.0	0.0

Source: Enrollment Statistics Tape

OIPR 12-87

Graph 6

Geographic Origins of UG Day Students

Fall 1984 vs Fall 1987

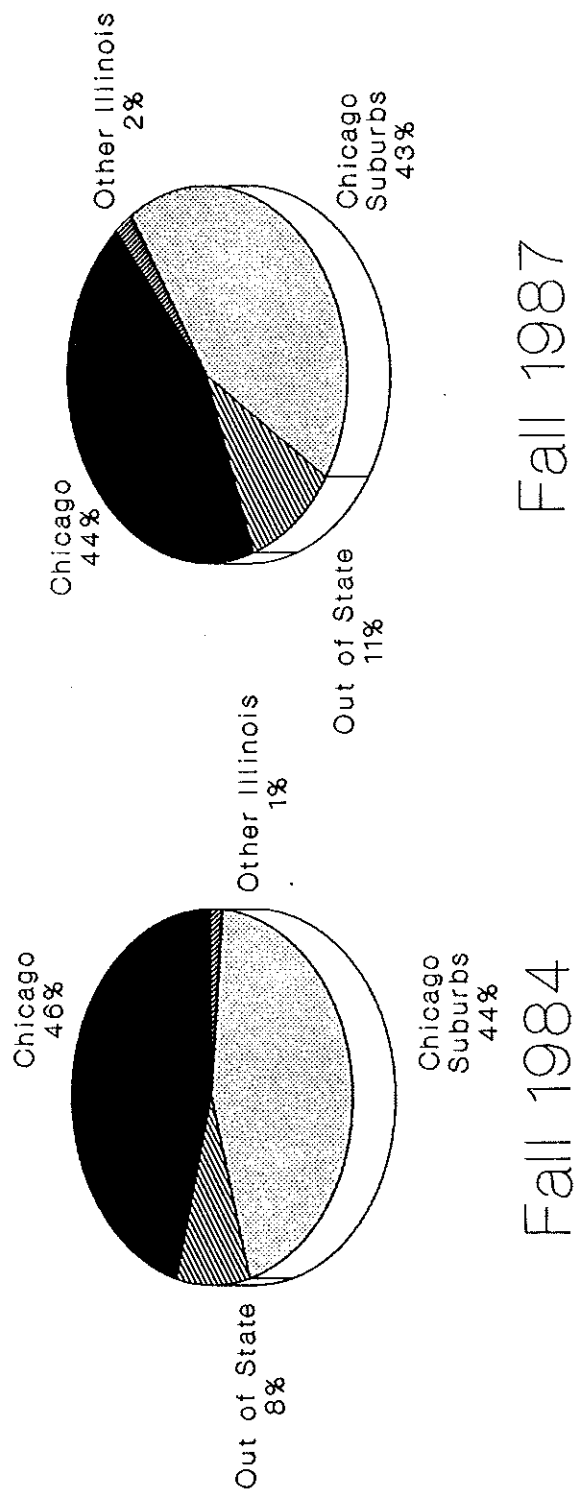


Table 2.10

Geographic Origins* of Undergraduate Day Students
Fall 1984 - Fall 1987

	1984	1985	1986	1987
	----	----	----	----
	%	%	%	%
City of Chicago	46.0	46.6	45.3	44.2
Chicago Suburbs	44.4	41.9	40.6	43.0
Other Illinois	1.4	3.8	2.3	2.2
Illinois Total	91.6	92.3	88.2	89.4
Out of State	8.4	7.7	11.8	10.6
Number of Students	4,375	4,710	4,988	5,428

*Based on parent zipcode.

Source: Enrollment Profile Tape
Enrollment Statistics Tape

OIPR 12-87

Table 2.11

Undergraduate Demographic Profile by Race
Fall 1987

	American Indian	Black	Asian	Hispanic	Foreign	White	Total
	----- %	----- %	----- %	----- %	----- %	----- %	----- %
College							
L A & S - Day	31.8	29.6	31.0	27.7	49.4	24.0	25.6
L A & S - Evening	4.5	15.8	11.7	7.2	6.0	9.9	10.5
Commerce - Day	22.8	22.5	39.0	36.3	37.4	31.3	30.9
Commerce - Evening	9.2	18.9	10.4	16.6	2.4	15.7	15.8
Education - Day	4.5	2.8	0.5	3.7	0.0	3.3	3.1
Education - Evening	4.5	1.4	0.2	3.0	0.0	0.7	0.9
Theatre	4.5	1.2	0.5	0.6	1.2	2.6	2.2
School for New Learning	18.2	6.9	2.0	4.2	0.0	9.0	8.0
Music	0.0	0.9	4.7	0.7	3.6	3.5	3.0
Class							
Freshmen	41.0	23.0	20.8	24.9	28.9	18.6	19.8
Sophomore	22.7	23.7	18.4	28.7	24.1	23.4	23.7
Junior	4.6	17.4	24.8	19.6	21.7	18.9	19.0
Senior	22.7	18.8	25.9	17.6	15.7	23.7	22.6
Non-Degree	9.0	13.5	6.7	6.8	3.6	11.8	11.4
Student At Large	0.0	1.0	1.0	0.6	0.0	0.9	0.9
Certificate	0.0	2.2	2.2	1.8	6.0	2.5	2.4
Pending	0.0	0.4	0.2	0.0	0.0	0.2	0.2
Sex							
Male	36.4	28.6	42.9	38.4	55.4	46.4	43.4
Female	63.6	71.4	57.1	61.6	44.6	53.6	56.6
Full/Part Time							
Full Time	59.1	61.5	73.0	66.6	84.3	62.2	63.2
Part Time	40.9	38.5	27.0	33.4	15.7	37.8	36.8
Entry Status							
New Freshmen	13.6	9.4	14.1	12.7	12.0	11.5	11.4
New Transfer	18.2	14.8	14.4	9.8	15.7	11.9	11.9
Returning	9.1	5.0	2.0	3.1	1.2	4.6	4.6
Continuing	59.1	69.7	69.5	73.5	69.9	71.6	71.7
New Non-Degree	0.0	1.1	0.0	0.9	1.2	0.4	0.4
Age							
Under 24	50.1	47.5	64.6	64.7	63.9	60.5	59.2
24 thru 29	13.6	26.9	19.1	22.0	25.3	20.6	21.5
30 thru 44	31.8	22.7	14.6	12.9	10.8	16.5	17.0
45 and over	4.5	2.7	1.5	0.4	0.0	2.3	2.2
unknown	0.0	0.2	0.2	0.0	0.0	0.1	0.1
Degree Status							
Degree Seeking	90.9	83.3	90.1	90.8	90.4	84.8	85.3
Nondegree Seeking	9.1	16.7	9.9	9.2	9.6	15.2	14.7

(continued)

Table 2.11 (continued)

Geographic Origin	American Indian	Black	Asian	Hispanic	Foreign	White	Total
	%	%	%	%	%	%	%
Suburban							
North	4.5	2.1	9.7	2.8	0.0	8.1	7.0
Northwest	4.5	0.7	7.7	3.7	0.0	12.6	10.1
West	0.0	3.0	6.9	6.5	0.0	17.9	14.5
Southwest	22.7	1.3	2.7	3.3	0.0	8.1	6.6
South	0.0	6.4	0.2	2.2	0.0	5.1	4.8
Total Suburban	31.7	13.5	27.2	18.5	0.0	51.8	43.0
Chicago							
North	18.2	7.2	46.2	22.1	0.0	18.5	18.9
Central	9.2	16.1	13.9	36.3	0.0	5.1	9.1
South	18.2	52.3	5.5	16.8	0.0	10.5	16.2
Loop	0.0	1.7	1.0	1.3	0.0	1.1	1.2
Total Chicago	45.6	77.3	66.6	76.5	0.0	35.2	45.4
Elsewhere in Illinois	0.0	0.6	2.5	1.1	0.0	2.6	2.2
Out-Of-State	22.7	8.6	3.7	3.9	100.0	10.4	9.4
Unknown	0.0	0.0	0.0	0.0	0.0	0.0	0.0
Number of Students	22	1,112	403	542	83	6,227	8,389

Source: Enrollment Statistics Tape

OIPR 12-87

Table 2.12
Graduate Demographic Profile by Race
Fall 1987

	Am. Indian	Black	Asian	Hispanic	Foreign	White	Total
	-----	-----	-----	-----	-----	-----	-----
	%	%	%	%	%	%	%
College							
L A & S	0.0	65.1	76.7	39.3	79.6	26.5	33.2
Commerce	66.7	26.1	21.2	33.7	16.7	67.1	60.1
Education	0.0	6.8	0.7	25.9	3.7	2.9	3.4
Theatre	33.3	0.5	0.0	0.0	0.0	1.2	1.1
School for New Learning	0.0	0.5	0.7	1.1	0.0	1.0	0.9
Music	0.0	1.0	0.7	0.0	0.0	1.3	1.3
Class							
Masters Candidate	100.0	85.9	91.1	88.8	97.3	93.7	93.2
PhD Candidate	0.0	1.6	2.3	2.2	0.9	2.1	2.0
Post-Masters	0.0	0.5	0.3	0.0	0.0	0.8	0.7
Pending	0.0	7.8	5.0	5.6	0.9	1.6	2.2
Unclassified	0.0	4.2	1.3	3.4	0.9	1.8	1.9
Sex							
Male	66.7	38.5	56.8	55.1	69.4	61.3	60.1
Female	33.3	61.5	43.2	44.9	30.6	38.7	39.9
Full/Part Time							
Full Time	100.0	41.1	61.1	43.8	76.9	33.9	37.4
Part Time	0.0	58.9	38.9	56.2	23.1	66.1	62.6
Entry Status							
New Graduate	66.7	27.1	26.6	30.3	30.6	22.0	23.0
Continuing	33.3	68.2	72.1	57.3	66.7	75.7	74.5
Returning	0.0	4.7	1.3	12.4	2.8	2.3	2.5
Age							
Under 24	33.3	10.9	6.3	6.7	8.3	8.7	8.6
24 thru 29	0.0	40.6	46.8	52.8	58.4	53.3	52.5
30 thru 44	66.7	43.3	43.2	36.0	32.4	35.1	36.0
45 and over	0.0	4.7	3.0	4.5	0.0	2.8	2.8
unknown	0.0	0.5	0.7	0.0	0.9	0.1	0.1
Degree Status							
Degree Seeking	100.0	94.3	96.3	93.3	98.1	96.0	96.0
Nondegree Seeking	0.0	4.7	3.0	5.6	1.9	2.6	2.7
Certificate	0.0	1.0	0.7	1.1	0.0	1.0	1.0
Student At Large	0.0	0.0	0.0	0.0	0.0	0.4	0.3
Geographic Origin							
Suburban							
North	0.0	4.2	10.3	3.4	0.0	10.9	10.2
Northwest	33.3	2.6	7.0	3.4	0.0	16.5	14.8
West	0.0	7.3	16.6	15.7	0.0	21.4	20.1
Southwest	0.0	2.1	3.3	5.6	0.0	6.5	5.9
South	0.0	6.3	0.3	2.2	0.0	3.7	3.4
Total Suburban	33.3	22.5	37.5	30.3	0.0	59.0	54.4
Chicago							
North	33.3	6.3	34.5	27.0	0.0	15.2	17.1
Central	33.3	10.4	11.6	16.9	0.0	7.0	8.2
South	0.0	44.7	3.7	15.7	0.0	5.2	7.0
Loop	0.0	1.6	1.7	0.0	0.0	2.2	2.1
Total Chicago	66.6	63.0	51.5	59.6	0.0	29.6	34.4
Elsewhere in Illinois	0.0	3.1	3.0	4.5	0.0	4.0	3.8
Out-Of-State	0.0	11.4	8.0	5.6	100.0	7.4	7.4

Table 2.13
Law Student Demographic Profile By Race
Fall 1987

	Am. Indian	Black	Asian	Hispanic	Foreign	White	Total
	-----	-----	-----	-----	-----	-----	-----
	%	%	%	%	%	%	%
College							
Law - Day	100.0	45.7	33.3	70.0	50.0	67.1	65.8
Law - Evening	0.0	54.3	66.7	30.0	50.0	32.9	34.2
Class							
Freshmen	100.0	40.0	16.7	40.0	50.0	31.3	31.7
Sophomore	0.0	11.4	11.1	3.3	0.0	6.6	6.7
Junior	0.0	14.3	11.1	13.4	0.0	25.6	24.5
Senior	0.0	31.4	38.9	40.0	0.0	26.4	27.2
Post-Masters	0.0	2.9	22.2	3.3	50.0	9.6	9.5
Non-Degree	0.0	0.0	0.0	0.0	0.0	0.5	0.4
Sex							
Male	0.0	48.6	72.2	56.7	0.0	62.7	62.0
Female	100.0	51.4	27.8	43.3	100.0	37.3	38.0
Full/Part Time							
Full Time	100.0	51.4	33.3	73.3	50.0	69.5	68.3
Part Time	0.0	48.6	66.7	26.7	50.0	30.5	31.7
Entry Status							
New Law	100.0	40.0	11.1	36.7	50.0	29.7	30.1
New Transfer	0.0	0.0	0.0	0.0	0.0	0.5	0.4
Continuing	0.0	57.1	83.3	63.3	50.0	66.5	66.3
Returning	0.0	0.0	5.6	0.0	0.0	0.5	0.5
New LLM	0.0	2.9	0.0	0.0	0.0	2.8	2.7
Age							
Under 24	100.0	25.7	5.6	20.0	0.0	29.6	28.7
24 thru 29	0.0	28.6	61.1	60.0	100.0	44.5	44.9
30 thru 44	0.0	42.8	33.3	20.0	0.0	24.3	24.9
45 and over	0.0	2.9	0.0	0.0	0.0	1.4	1.3
unknown	0.0	0.0	0.0	0.0	0.0	0.2	0.2
Degree Status							
Degree Seeking	100.0	100.0	100.0	100.0	100.0	99.5	99.6
Nondegree Seeking	0.0	0.0	0.0	0.0	0.0	0.5	0.4
Geographic Origin							
Suburban							
North	100.0	2.9	16.7	0.0	0.0	14.4	13.6
Northwest	0.0	0.0	0.0	3.3	50.0	12.8	11.8
West	0.0	0.0	0.0	6.7	0.0	16.4	15.1
Southwest	0.0	2.9	0.0	3.3	0.0	5.1	4.9
South	0.0	11.4	0.0	6.7	0.0	5.4	5.5
Total Suburban	100.0	17.2	16.7	20.0	50.0	54.1	50.9
Chicago							
North	0.0	5.7	61.1	26.7	50.0	16.9	17.6
Central	0.0	2.9	0.0	20.0	0.0	5.3	5.6
South	0.0	51.3	0.0	6.7	0.0	4.5	6.2
Loop	0.0	0.0	11.1	3.3	0.0	2.9	3.0
Total Chicago	0.0	59.9	72.2	56.7	50.0	29.6	32.4
Elsewhere in Illinois	0.0	0.0	0.0	6.6	0.0	3.2	3.2
Out-Of-State	0.0	22.9	11.1	16.7	0.0	13.1	13.5

Number of Students

1

25

18

20

0

215

251

Table 3.1

Applications, Acceptances, Enrollment Trends - Undergraduate**
Fall 1983 - Fall 1987

	1983	1984	1985	1986	1987
	----	----	----	----	----
1st Time Freshmen					

# of Applications	1,864	2,133	2,441	2,181	3,053
% Annual Change	0.11	14.43	14.44	-10.65	39.98
# of Acceptances	1,227	1,523	1,709	1,434	2,310
% Annual Change	-11.41	24.12	12.21	-16.09	61.09
# of Enrollments*	653	753	838	827	959
% Annual Change	-5.50	15.31	11.29	-1.31	15.96
Acceptance Rate	65.8	71.4	70.0	65.7	75.7
Yield	53.2	49.4	49.0	57.7	41.5
Transfers					

# of Applications	1,381	1,387	1,529	1,605	1,860
% Annual Change	12.83	0.43	10.24	4.97	15.89
# of Acceptances	956	1,173	1,381	1,270	1,400
% Annual Change	-3.63	22.70	17.73	-8.04	10.24
# of Enrollments*	653	788	875	888	1,031 ***
% Annual Change	2.67	20.67	11.04	1.49	16.10
Acceptance Rate	69.2	84.6	90.3	79.1	75.3
Yield	68.3	67.2	63.4	69.9	73.6

Acceptance rate= % of applicants accepted by DePaul.
Yield= % of accepted students matriculated at DePaul.

*The enrollment statistics tape includes 827 freshmen instead of 824 as reported in the Registrar's Report in 1986.

**Includes Summer Bridge students. The Summer Bridge Program is an academic enrichment program that aids students who fall below the University's entrance requirements.

***The enrollment statistics tape reports one less transfer student than the Registrar's Report.

Graph 7

Sources of Undergraduate Students Fall 1983 - Fall 1987

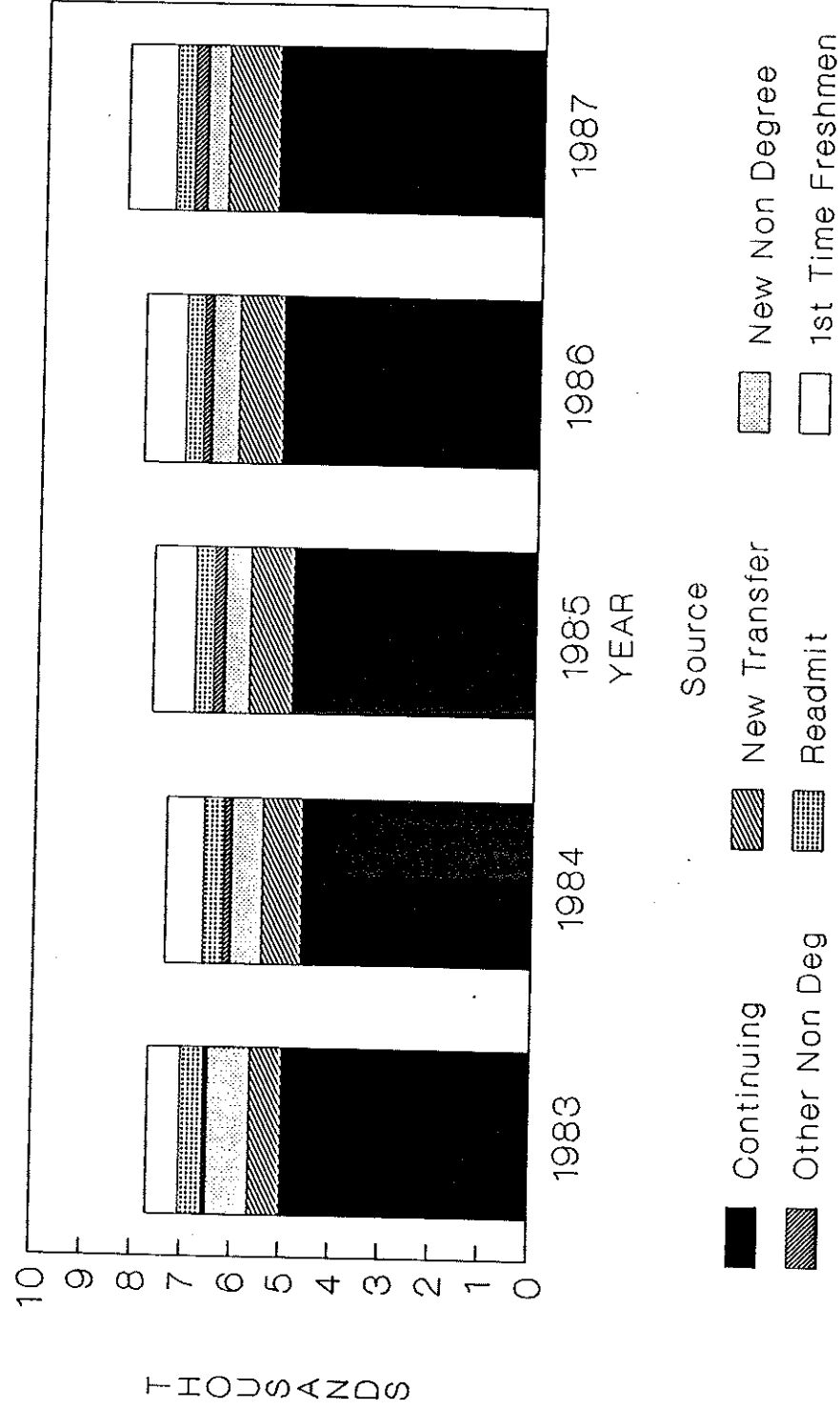


Table 3.2
Sources of Undergraduate Students
Fall 1983 - Fall 1987

Source	1983	1984	1985	1986	1987
Degree Seeking					
New First	653	753	838	824	959
New Transfer	653	788	875	888	1,025
Non Degree Seeking					
New First	200	141	136	95	27
New Transfer	663	504	378	452	409
Student at Large	50	39	31	30	45
Certificate	20	105*	190	146	205
Readmit	473	403	372	351	371
Continuing	4,981	4,646	4,894	5,190	5,348
Total	7,693	7,379	7,714	7,976	8,389

*Students in the Computer Career Program were reclassified in 1984 from non degree transfers to certificate students.

Source: Registrar's Report

OIPR 12-87

TABLE 3.3

Freshmen Academic Profile
(Not Including Bridge Students)
Fall 1983 - Fall 1987

	1983	1984	1985	1986	1987
	----	----	----	----	----
HIGH SCHOOL GPA	n/a	n/a	3.1	3.1	3.2
ACT					
Composite	22.3	22.5	22.5	22.6	22.7
English	21.3	21.5	21.4	21.7	22.1
Math	22.2	22.1	22.3	22.2	22.2
National	18.8	18.5	18.6	18.8	18.7
HIGH SCHOOL RANK					
Top 10%	n/a	28.2	35.4	34.8	25.7
Top 25%	n/a	60.0	63.5	60.4	60.5
Top 50%	n/a	90.6	90.5	89.3	93.0
Top 75%	n/a	98.9	99.3	98.6	99.6
NUMBER OF STUDENTS	653	753	806	750	883

(Including Bridge Students)

	1983	1984	1985	1986	1987
	----	----	----	----	----
HIGH SCHOOL GPA	n/a	n/a	3.1	3.1	3.2
ACT					
Composite	22.3	22.5	22.3	21.9	22.2
English	21.3	21.5	21.2	21.3	21.7
Math	22.2	22.1	22.0	21.3	21.4
National	18.8	18.5	18.6	18.8	18.7
HIGH SCHOOL RANK					
Top 10%	n/a	28.2	35.3	28.2	24.4
Top 25%	n/a	60.0	63.4	56.4	57.1
Top 50%	n/a	90.6	90.0	88.3	89.8
Top 75%	n/a	98.9	98.9	98.6	98.9
NUMBER OF STUDENTS	653	753	834	827*	959

*The enrollment statistics tape includes 827 freshmen instead of 824 as reported in the Registrar's Report.

Graph 8

ACT Scores by Race Fall 1987

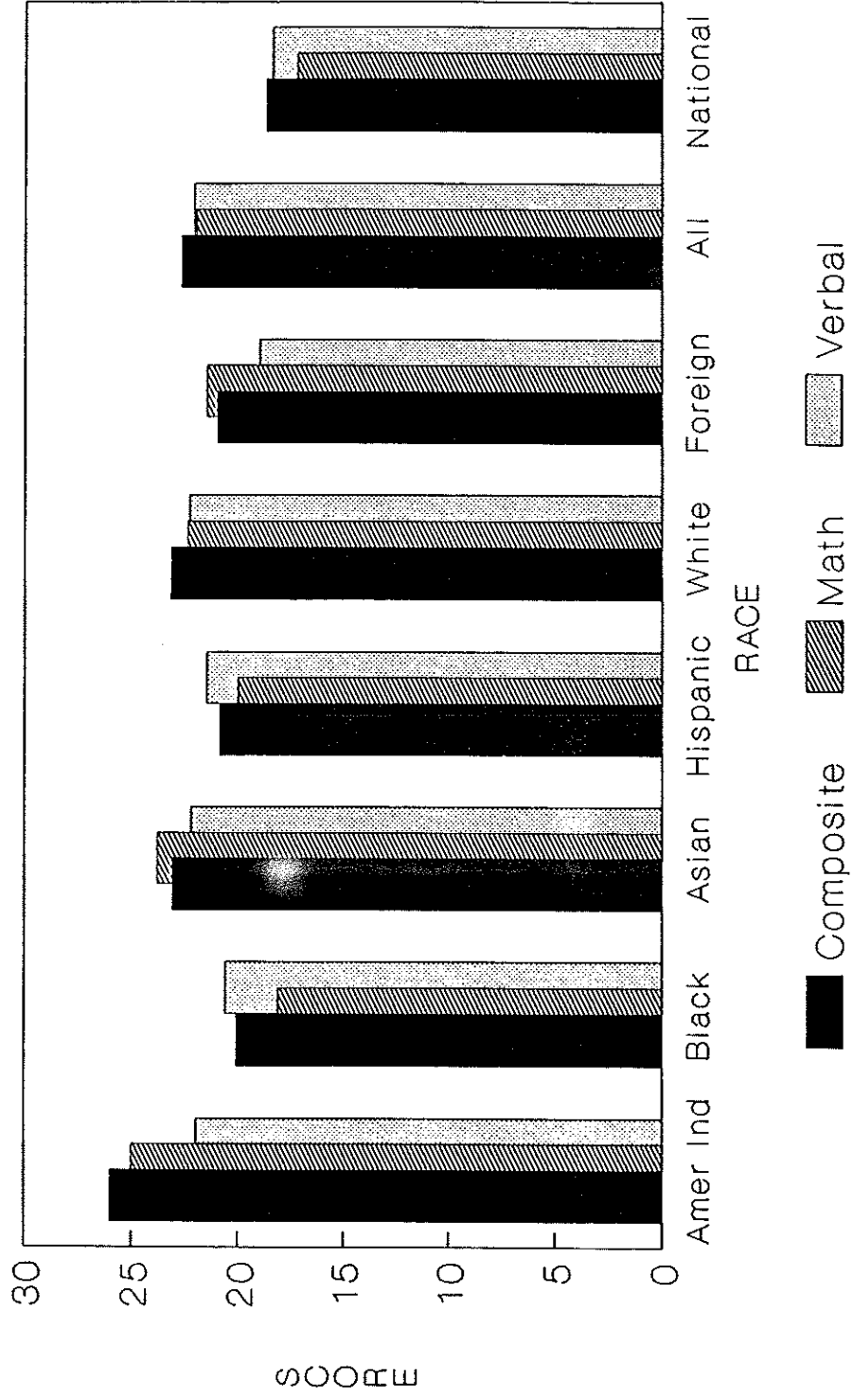


Table 3.4

ACT Scores by Race*
Fall 1987

	Composite	Math	Verbal	Number of Students
American Indian	26.0	25.0	22.0	1
Black	20.1	18.1	20.6	56
Asian-Pacific	23.1	23.8	22.2	44
Hispanic	20.9	20.0	21.5	48
White	23.2	22.4	22.3	551
Foreign	21.0	21.5	19.0	6
All DePaul	22.7	22.0	22.1	706
National	18.7	17.2	18.4	--

*excludes freshmen who participated
in the Summer Bridge Program.

Source: Enrollment Statistics Tape

OIPR 12-87

Table 3.5

Freshmen Demographic Profile
Fall 1983 - Fall 1987

	1983	1984	1985*	1986*	1987*
	----	----	----	----	----
	%	%	%	%	%
RACE					
American Indian	0.0	0.1	0.1	0.4	0.3
Black	10.4	11.7	13.1	12.7	11.0
Asian Pacific	3.2	5.0	4.6	5.1	6.0
Hispanic	5.4	5.8	9.2	8.7	7.2
Foreign	0.0	0.9	0.7	0.8	1.0
White	80.9	76.3	72.3	72.3	74.5
COLLEGE					
LA & S	41.8	39.2	41.6	41.4	41.9
Commerce	45.0	48.2	47.0	44.2	40.1
Education	2.1	2.5	3.0	4.8	3.9
Theatre	4.1	3.9	2.7	4.7	6.9
Music	6.9	6.2	5.6	4.8	7.2
TYPE OF HIGH SCHOOL					
Public	44.7	44.2	46.7	46.9	58.5
Private	45.6	46.2	41.6	42.0	38.2
GED	0.5	0.8	1.0	0.5	1.1
unknown	9.2	8.7	10.6	10.6	2.2
GEOGRAPHIC ORIGIN***					
Suburban North	5.2	6.0	6.0	5.4	5.6
Suburban Northwest	6.3	10.4	9.5	7.5	10.6
Suburban West	15.8	15.5	15.7	14.1	12.4
Suburban Southwest	6.0	6.5	5.6	5.2	5.8
Suburban South	3.5	4.8	4.3	4.7	4.1
Suburban Subtotal	36.8	43.2	41.1	36.9	38.5
Chicago North	24.0	19.7	21.1	20.2	17.3
Chicago Central	10.0	10.0	9.3	10.4	8.2
Chicago South	20.4	17.4	17.0	14.4	13.2
Chicago Loop	0.2	0.4	0.2	0.9	0.3
Chicago Subtotal	54.6	47.5	47.6	45.9	39.0
elsewhere in Illinois	1.4	1.9	3.8	2.7	4.2
Out - Of - State	7.4	7.6	7.5	14.4	18.3

(continued)

Table 3.5 (continued)

	1983	1984	1985*	1986*	1987*
	-----	-----	-----	-----	-----
	%	%	%	%	%
SEX					
Male	49.0	49.5	47.7	46.1	44.7
Female	51.0	50.5	52.3	53.9	55.3
AGE					
under 24	98.0	98.8	98.2	98.0	94.9
24 - 29	0.9	0.9	1.6	1.3	3.5
30 and over	0.4	0.2	0.3	0.6	1.6
RELIGION					
Roman Catholic	68.1	61.1	58.2	57.2	47.8
Other or unknown	31.9	38.9	41.8	42.8	52.2
NUMBER OF STUDENTS	653	753	834	827**	959

*Includes New Bridge Students. The Summer Bridge Program is an academic enrichment program that aids students who fall below the University's entrance requirements.

**The enrollment statistics tape includes 827 students instead of 824 as reported in the Registrar's Report.

***Based on parent zipcode.

Source: Enrollment Statistics Tape

OIPR 12-87

Table 3.6

Freshmen Demographic Profile By College
Fall 1987

	LA&S	Commerce	Education	Theatre	Music	Total
	%	%	%	%	%	%
RACE						
American Indian	0.8	0.0	0.0	0.0	0.0	0.3
Black	12.5	10.6	13.5	6.1	5.8	10.9
Asian Pacific	5.0	7.5	0.0	1.5	10.1	6.0
Hispanic	7.5	7.8	13.5	3.0	2.9	7.2
Foreign	1.3	1.0	0.0	1.5	0.0	1.0
White	72.9	73.1	73.0	87.9	81.2	74.6
TYPE OF HIGH SCHOOL						
Public	56.5	56.6	50.0	72.3	73.9	58.5
Private	39.1	41.3	47.3	24.7	24.6	38.2
GED	2.2	0.5	0.0	0.0	0.0	1.1
Unknown	2.2	1.6	2.7	3.0	1.5	2.2
GEOGRAPHIC ORIGIN*						
Suburban North	6.2	5.0	8.1	4.5	5.8	5.6
Suburban Northwest	9.5	12.6	13.5	6.1	10.2	10.6
Suburban West	9.5	16.5	8.1	3.0	18.9	12.4
Suburban Southwest	7.4	4.4	2.7	1.5	10.2	5.8
Suburban South	4.7	4.2	5.4	1.5	1.4	4.1
Suburban Subtotal	37.3	42.7	37.8	16.6	46.5	38.5
Chicago North	18.6	21.1	8.1	3.0	5.8	17.3
Chicago Central	9.0	8.7	13.5	6.1	1.4	8.2
Chicago South	13.8	15.2	19.0	1.5	5.8	13.2
Chicago Loop	0.7	0.0	0.0	0.0	0.0	0.3
Chicago Subtotal	42.1	45.0	40.6	10.6	13.0	39.0
Elsewhere-Illinois	4.7	2.6	5.4	4.5	7.2	4.2
Out of State	15.9	9.7	16.2	68.3	33.3	18.3
SEX						
Male	40.5	48.8	21.6	43.9	59.4	44.7
Female	59.5	51.2	78.4	56.1	40.6	55.3
AGE						
Under 24	94.8	94.2	91.9	95.5	100.0	94.9
24-29	3.2	4.2	8.1	3.0	0.0	3.5
30 and older	2.0	1.6	0.0	1.5	0.0	1.6
RELIGION						
Roman Catholic	47.3	53.0	48.6	31.8	36.2	47.8
Other or unknown	52.7	47.0	51.4	68.2	63.8	52.2
NUMBER OF STUDENTS	402	385	37	66	69	959

*Based on Parent's Address

Table 3.7

Freshmen Academic Profile By College
(Not including Bridge students)
Fall 1987

	LA&S	Commerce	Education	Theatre	Music	Total
	%	%	%	%	%	%
HIGH SCHOOL GPA	3.1	3.3	3.1	3.1	3.1	3.2
ACT						
Composite	22.8	22.7	21.1	23.5	23.3	22.7
English	22.1	21.8	21.4	23.6	23.3	22.1
Math	21.8	22.7	18.9	20.6	21.4	22.2
SAT						
Verbal	483	475	453	525	503	487
Math	510	533	511	511	516	519
HIGH SCHOOL RANK						
Top 10%	23.9	31.5	17.9	11.1	21.9	25.7
Top 25%	59.7	64.6	42.9	51.9	59.4	60.5
Top 50%	94.0	94.9	92.9	83.3	87.5	93.0
Top 75%	99.7	100.0	100.0	98.1	98.4	99.6

(Including Bridge students)

	LA&S	Commerce	Education	Theatre	Music	Total
	%	%	%	%	%	%
HIGH SCHOOL GPA	3.1	3.3	3.1	3.1	3.1	3.2
ACT						
Composite	22.2	22.1	20.8	22.6	23.2	22.2
English	21.6	21.4	21.2	22.9	23.2	21.7
Math	21.1	22.1	18.4	19.8	21.4	21.4
SAT						
Verbal	473	471	453	516	504	480
Math	499	531	511	504	502	512
HIGH SCHOOL RANK						
Top 10%	22.9	29.5	16.7	10.9	21.2	24.4
Top 25%	56.6	59.9	40.0	50.9	57.6	57.1
Top 50%	90.3	91.2	90.0	83.7	84.9	89.8
Top 75%	96.6	99.7	100.0	98.2	97.0	98.9

Table 3.8

Transfer Demographic Profile
Fall 1983 - Fall 1987

	1983	1984	1985	1986	1987
	----	----	----	----	----
	%	%	%	%	%
RACE					
American Indian	0.1	0.3	0.5	0.1	0.4
Black	16.4	15.5	19.1	17.0	16.0
Asian Pacific	6.0	3.8	4.1	4.5	5.6
Hispanic	5.0	4.1	6.4	7.2	5.1
Foreign	1.5	2.0	1.1	2.2	1.3
White	70.9	73.7	68.5	68.9	70.5
Unknown	0.1	0.6	0.3	0.0	1.1
GEOGRAPHIC LOCATION**					
Suburban North	7.9	8.6	7.0	7.0	6.7
Suburban Northwest	8.8	9.5	8.6	9.8	10.9
Suburban West	16.8	14.7	13.5	14.6	15.2
Suburban Southwest	4.8	6.4	7.0	7.0	7.2
Suburban South	5.6	6.6	6.3	5.4	6.2
Suburban Subtotal	43.9	45.8	42.4	43.8	46.2
Chicago North	21.6	22.7	20.2	21.0	20.4
Chicago Central	12.6	8.3	11.7	10.9	12.2
Chicago South	17.0	17.9	17.6	15.5	15.5
Chicago Loop	1.3	1.2	2.2	2.6	1.6
Chicago Subtotal	52.5	50.1	51.7	50.0	49.7
Elsewhere-Illinois	1.7	1.4	1.5	1.5	1.2
Out - Of - State	1.9	2.7	4.6	4.4	2.9
TRANSFER INSTITUTION					
Illinois Public Univ	17.2	23.3	22.2	22.7	20.7
Illinois Public CC	48.1	37.6	37.2	38.4	35.2
Illinois Private	16.1	19.6	16.4	17.8	15.2
Out Of State	18.1	19.6	24.3	18.3	25.2
Unknown	0.0	0.0	0.0	2.7	3.7

(continued)

Table 3.8 (continued)

	1983	1984	1985	1986	1987
	----	----	----	----	----
	%	%	%	%	%
SEX					
Male	44.6	44.0	42.5	40.9	41.2
Female	55.4	56.0	57.5	59.1	58.8
AGE					
under 24	67.2	73.3	71.8	67.6	64.8
24 - 29	20.0	18.2	18.1	22.0	23.8
30 and over	12.8	8.5	9.9	10.4	11.4
RELIGION					
Roman Catholic	61.6	60.6	66.3	56.0	53.3
Other or unknown	38.4	39.4	33.6	44.0	46.7
TRANSFER GPA	2.8	2.8	2.8	2.8	2.8
NUMBER OF STUDENTS	653	788	875	889*	1031***

*The enrollment statistics tape includes 1 more student than the Registrar's Report.

**Based on current address.

***The enrollment statistics tape includes 1 less student than the Registrar's Report.

Source: Enrollment Statistics Tape

OIPR 12-87

Table 3.9

Transfer Demographic Profile By College*
Fall 1987

	LA&S	Commerce	Education	Theatre	Music	SNL	Total
	%	%	%	%	%	%	%
RACE							
American Indian	0.0	0.4	2.7	7.1	0.0	0.0	0.4
Black	19.7	13.6	13.5	7.1	0.0	28.6	16.0
Asian Pacific	5.2	6.6	0.0	0.0	5.9	0.0	5.6
Hispanic	5.0	5.4	5.4	0.0	5.9	0.0	5.1
Foreign	1.6	1.0	0.0	0.0	5.9	0.0	1.3
White	68.5	73.0	78.4	85.7	82.3	71.4	71.6
TRANSFER INSTITUTION							
Illinois Public Univ	20.7	22.2	18.9	7.1	0.0	0.0	20.7
Illinois Public CC	33.9	37.5	35.2	14.3	23.5	14.3	35.2
Illinois Private	14.0	16.3	8.1	7.1	29.4	28.6	15.2
Out of State	28.5	19.5	37.8	64.4	47.1	42.8	25.2
Unknown	2.9	4.5	0.0	7.1	0.0	14.3	3.7
GEOGRAPHIC ORIGIN**							
Suburban North	7.5	5.7	10.8	14.3	5.9	0.0	6.7
Suburban Northwest	12.4	9.7	13.5	0.0	5.9	14.3	10.9
Suburban West	14.0	16.0	10.8	0.0	41.2	28.6	15.2
Suburban Southwest	5.7	9.2	0.0	7.1	0.0	14.3	7.2
Suburban South	4.3	8.2	5.4	7.1	0.0	0.0	6.2
Suburban Subtotal	43.9	48.8	40.5	28.5	53.0	57.2	46.2
Chicago North	20.4	20.3	21.6	7.1	23.5	42.8	20.4
Chicago Central	14.9	9.7	18.9	14.3	5.9	0.0	12.2
Chicago South	16.3	16.2	10.8	0.0	5.9	0.0	15.5
Chicago Loop	1.8	1.4	2.7	0.0	0.0	0.0	1.6
Chicago Subtotal	53.4	47.6	54.0	21.4	35.3	42.8	49.7
Elsewhere-Illinois	0.5	1.5	2.7	7.2	0.0	0.0	1.2
Out of State	2.2	2.1	2.8	42.9	11.7	0.0	2.9
SEX							
Male	39.4	44.6	18.9	50.0	41.2	14.3	41.2
Female	60.6	55.4	81.1	50.0	58.8	85.7	58.8
AGE							
Under 24	60.8	68.1	67.6	85.9	70.6	0.0	64.8
24-29	25.2	23.5	18.9	7.1	11.8	42.9	23.8
30 and older	14.0	8.4	13.5	7.1	17.6	57.1	11.4
RELIGION							
Roman Catholic	50.2	58.0	51.4	28.6	29.4	28.6	53.3
Other or unknown	49.8	42.0	48.6	71.4	70.6	71.4	46.7
NUMBER OF STUDENTS							
	442	514	37	14	17	7	1,031

*The enrollment statistics tape contains 1 less student than in the Registrar's Report.

**Based on Current Address

Table 3.10

Transfer Academic Profile by College*
Fall 1987

	LA&S	Commerce	Education	Theatre	Music	Total
	-----	-----	-----	-----	-----	-----
	%	%	%	%	%	%
TRANSFER INSTITUTION						
Illinois Public Univ	20.6	22.2	18.9	7.1	0.0	20.7
Illinois Public CC	33.9	37.5	35.1	14.3	23.5	35.2
Illinois Private	14.1	16.3	8.2	7.2	29.4	15.2
Out of State	28.5	19.5	37.8	64.3	47.1	25.2
Unknown	2.9	4.5	0.0	7.1	0.0	3.7
TRANSFER GPA	2.7	2.8	2.8	2.8	3.1	2.8
NUMBER OF STUDENTS	442	514	37	14	17	1,031

*The enrollment statistics tape contains 1 less student than in the Registrar's Report.

Source: Enrollment Statistics Tape

OIPR 12-87

Table 3.11

Applications, Acceptances, Enrollment Trends - Graduate*
 Fall 1983 - Fall 1987

	1983	1984	1985	1986	1987
	----	----	----	----	----
Entering Graduates					

# of Applications	1,841	1,840	2,141	2,475	2,417
% Annual Change	4.90	-0.05	16.36	15.60	-2.34
# of Acceptances	1,129	1,398	1,524	1,503	1,499
% Annual Change	5.71	23.83	9.01	-1.38	-0.27
# of Enrollments	838	1,037	1,009	1,064	1,021
% Annual Change	-5.63	23.75	-2.70	5.45	-4.04
Acceptance Rate	61.3	76.0	71.2	60.7	62.0
Yield	74.2	74.2	66.2	70.8	68.1

Acceptance rate= % of applicants accepted by DePaul.
 Yield= % of accepted students matriculated at DePaul.

*Includes new LLM students, as defined by IBHE.

Source: IBHE Fall Enrollment Survey

OIPR 12-87

Table 3.12

Sources and Enrollment of Graduate Students*
Fall 1983 - Fall 1987

	1983	1984	1985	1986	1987
	----	----	----	----	----
Source					

New First	799	994	987	1,064	1,021
Readmit	79	93	107	121	110
Continuing	2,728	2,734	2,958	2,977	3,197
Total	3,606	3,821	4,052	4,162	4,328
Enrollment					

Masters Candidates	3,274	3,464	3,678	3,713	4,031
Non-Degree	146	218	249	192	171
Doctoral Candidates	52	37	32	21	32
Admission Pending	134	102	93	236	94
Total	3,606	3,821	4,052	4,162	4,328

*Excludes Law and LLM students.

Source: Registrar's Report

OIPR 12-87

Table 3.13

New Graduate Student Demographic Profile*
Fall 1983 - Fall 1987

	1983	1984	1985	1986	1987
	---	---	---	---	---
	%	%	%	%	%
RACE					
American Indian	0.1	0.2	0.1	0.2	0.2
Black	5.5	4.9	5.5	8.4	5.2
Asian Pacific	3.8	5.1	6.3	8.8	8.1
Hispanic	3.5	1.0	1.6	2.2	2.7
Foreign	2.4	1.3	1.9	2.9	3.3
White	84.7	87.4	84.6	77.5	80.5
COLLEGE					
LA&S	35.2	36.5	42.7	43.4	37.4
Commerce	54.4	54.3	47.0	39.5	53.5
Education	4.4	4.9	5.0	11.5	3.1
Music	4.1	2.6	3.0	2.1	2.0
Theatre	1.9	1.6	2.3	2.3	2.0
SNL	--	--	--	1.3	2.0
GEOGRAPHIC LOCATION**					
Suburban North	10.5	11.2	11.3	10.4	9.4
Suburban Northwest	12.4	12.8	13.4	12.2	13.1
Suburban West	15.3	16.4	19.6	17.9	20.8
Suburban Southwest	5.3	6.0	5.8	3.7	5.3
Suburban South	3.4	3.1	3.7	3.3	3.0
Suburban Subtotal	46.9	49.5	53.8	47.5	51.6
Chicago North	22.5	24.9	20.7	24.1	21.1
Chicago Central	12.6	10.7	10.4	11.0	11.3
Chicago South	8.0	7.3	6.8	8.9	6.4
Chicago Loop	3.6	2.3	3.1	3.3	3.1
Chicago Subtotal	46.7	45.2	41.0	47.3	41.9
elsewhere in Illinois	1.6	2.0	2.6	2.3	3.1
Out - Of - State	1.6	1.4	2.3	2.9	3.4
unknown	3.1	1.8	0.3	0.0	0.0
SEX					
Male	58.1	59.3	55.9	54.3	56.3
Female	41.9	40.7	44.1	45.7	43.7

(continued)

Table 3.13 (continued)

	1983	1984	1985	1986	1987
	----	----	----	----	----
	%	%	%	%	%
AGE					
under 24	21.5	19.8	19.4	16.5	19.9
24 - 29	50.2	49.3	46.7	45.1	51.1
30 - 44	25.9	28.1	29.8	30.9	26.4
45 and over	2.4	2.8	4.2	7.5	2.6
RELIGION					
Roman Catholic	50.9	48.1	47.5	43.0	48.2
Other or Unknown	49.1	51.9	52.5	57.0	51.8
GMAT (Commerce Only)					
DePaul	541	545	525	535	538
National	469	472	472	478	481
NUMBER OF STUDENTS	799	994	987	1,064	995

*Excludes Law and LL.M students and includes degree and non-degree students

**Based on current address

Source: Enrollment Statistics Tape

OIPR 12-87

Table 3.14

Applications, Acceptances, Enrollment Trends - Graduate*
Fall 1983 - Fall 1987

	1983	1984	1985	1986	1987
	-----	-----	-----	-----	-----
Entering Professionals (JD)					

# of Applications	2,375	1,974	1,865	1,673	1,671
% Annual Change	-6.83	-16.88	-5.52	-10.29	-0.12
# of Acceptances	1,250	1,188	1,071	893	923
% Annual Change	13.74	-4.96	-9.85	-16.62	3.36
# of Enrollments	333	313	305	305	290
% Annual Change	-10.00	-6.01	-2.56	0.00	-4.92
Acceptance Rate	52.6	60.2	57.4	53.4	55.2
Yield	26.6	26.3	28.5	34.2	31.4

Acceptance rate= % of applicants accepted by DePaul.
Yield= % of accepted students matriculated at DePaul.

Source: IBHE Fall Enrollment Survey

OIPR 12-87

Table 3.15

Sources and Enrollment of Law Students*
Fall 1983 - Fall 1987

	1983	1984	1985	1986	1987
	----	----	----	----	----
Source					

New First	372	356	327	332	318
Readmit	4	5	4	5	5
Continuing	764	742	731	655	644
Transfer	7	23	8	2	4
Total	1,147	1,126	1,070	994	971
Enrollment					

Day JD	704	706	670	642	639
Evening JD	326	303	302	269	240
LLM	117	117	98	83	92
Total	1,147	1,126	1,070	994	971

*Includes both new JD and LLM students

Source: Registrar's Report

OIPR 12-87

Table 3.16

New JD Student Demographic Profile
Fall 1983 - Fall 1987

	1983	1984	1985	1986	1987
	----	----	----	----	----
	%	%	%	%	%
RACE					
American Indian	0.0	0.0	0.3	0.3	0.3
Black	4.8	8.9	4.3	1.9	4.8
Asian Pacific	0.9	1.3	2.0	1.6	0.7
Hispanic	2.7	2.9	3.0	2.9	3.8
Foreign	0.0	0.3	0.0	0.3	0.3
White	91.6	86.6	90.5	93.0	90.1
COLLEGE					
Law - Day	73.3	72.2	72.5	75.6	72.7
Law - Evening	26.7	27.8	27.5	24.4	27.3
GEOGRAPHIC LOCATION*					
Suburban North	11.1	11.8	12.8	12.1	12.0
Suburban Northwest	9.9	12.5	13.1	11.1	8.6
Suburban West	16.8	14.1	14.1	16.0	15.3
Suburban Southwest	3.3	4.8	3.9	3.8	4.5
Suburban South	4.2	4.8	3.9	5.7	7.2
Suburban Total	45.3	48.0	47.8	48.7	47.6
Chicago North	23.4	21.1	26.9	21.3	25.6
Chicago Central	11.1	6.1	5.9	12.1	11.3
Chicago South	6.9	9.6	7.9	6.0	6.2
Chicago Loop	4.5	2.2	4.3	4.1	4.1
Chicago Total	45.9	39.0	45.0	43.5	47.2
elsewhere in Illinois	0.6	1.3	1.6	2.9	3.1
Northwest Indiana	1.5	1.3	0.0	3.2	2.1
unknown	6.6	10.5	5.6	1.6	0.0
SEX					
Male	62.5	61.3	63.0	61.3	57.2
Female	37.5	38.7	37.0	38.7	42.8
AGE					
less than 24	58.0	53.4	49.2	49.9	56.9
24 - 29	30.0	27.5	30.2	33.0	28.9
30 - 44	11.4	16.3	18.7	16.5	13.5
45 and over	0.6	2.9	2.0	0.6	0.7
LSAT SCORES					
DePaul	33	33	32	34	34
National	29	29	31	30	30
UNDERGRADUATE GPA					
	3.13	3.01	3.10	3.06	3.10
NUMBER OF STUDENTS					
	333	313	305	305	290

* Based on current address

Graph 9

Degrees Conferred 1982 - 1987

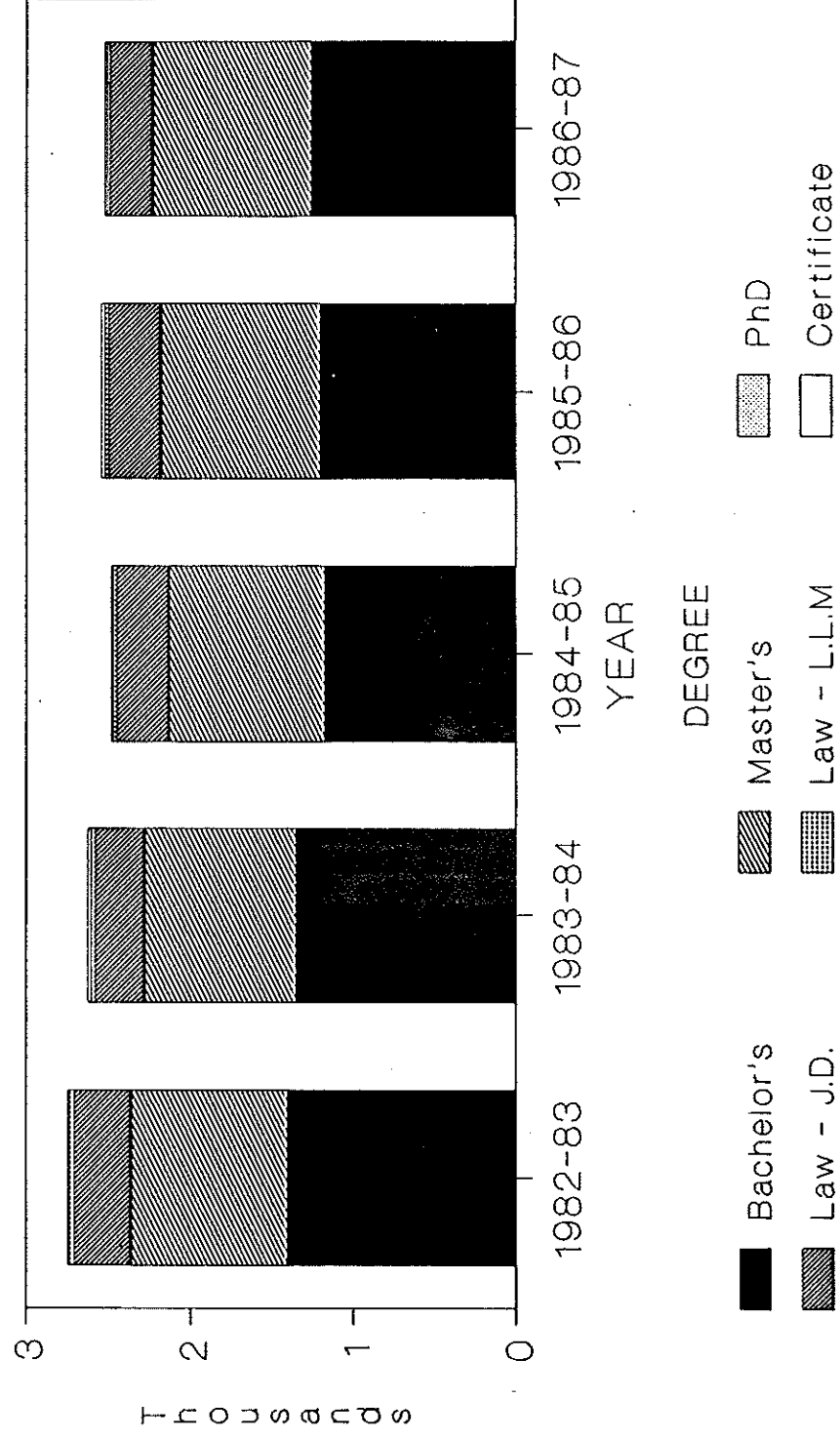


Table 4.1

Degrees Conferred*
1982 - 1987

	1982-1983	1983-1984	1984-1985	1985-1986	1986-1987
Bachelor's	1,408	1,354	1,176	1,206	1,258
Master's	949	923	955	972	971
PhD	13	11	10	10	9
Law - J.D	338	292	311	312	255
Law - L.L.M	32	25	22	24	17
Certificate	8	19	13	21	13
Total	2,748	2,624	2,487	2,545	2,523

* Between July 1 and June 30 of years indicated.

Source: Convocation Report

OIPR 12-87

Table 4.2
Degrees Conferred By College*
1982 - 1987

College	1982-1983	1983-1984	1984-1985	1985-1986	1986-1987
Commerce					
Bachelor's	734	703	548	551	639
Master's	665	627	637	627	615
Total	1,399	1,330	1,185	1,178	1,254
Education					
Certificate	0	14	11	14	12
Bachelor's	37	27	31	26	37
Master's	65	37	44	30	41
Total	102	78	86	70	90
Theatre					
Certificate	8	5	2	7	1
Bachelor's	10	28	22	25	26
Master's	2	1	5	9	10
Total	20	34	29	41	37
LA & S					
Bachelor's	484	466	446	473	434
Master's	203	241	246	285	295
PhD	13	11	10	10	9
Total	700	718	702	768	738
Music					
Bachelor's	50	34	52	31	38
Master's	14	17	23	21	9
Total	64	51	75	52	47
School for New Learning					
Bachelor's	93	96	77	100	84
Master's	-	-	-	-	1
Total	93	96	77	100	85
Law					
L.L.M**	32	25	22	24	17
J.D.	338	292	311	312	255
Total	370	317	333	336	272

(continued)

Table 4.2 (continued)

	1982-1983	1983-1984	1984-1985	1985-1986	1986-1987
University Total					
Certificate	8	19	13	21	13
Bachelor's	1,408	1,354	1,176	1,206	1,258
Master's	981	948	977	996	988
PhD	13	11	10	10	9
Professional	338	292	311	312	255
Total	2,748	2,624	2,487	2,545	2,523

*Between July 1 and June 30 of years indicated.

**L.L.M. degrees are Master's degrees.

Source: Convocation Report

OIPR 12-87

Table 4.3

Degrees Conferred By Major*
1982 - 1987

Bachelor's Degrees	1982-83	1983-84	1984-85	1985-86	1986-87
Commerce					
Accounting	327	315	235	215	247
Business Economics	9	9	5	5	11
Finance	103	113	116	127	138
Gen Bus/Bus Admin	62	49	46	43	41
Management	122	91	3	--	--
Oper Management	--	--	17	14	20
Human Resource Management	--	--	36	45	32
Marketing	111	126	90	102	150
Subtotal	734	703	548	551	639
Education					
Business Education	3	4	6	0	2
Elementary Education	21	17	22	17	24
Health Education	3	1	0	0	0
Physical Education	10	5	3	9	11
Subtotal	37	27	31	26	37
Theatre School					
Acting	7	21	18	17	19
Costume Design	0	1	2	2	1
Lighting Design	3	3	0	2	1
Production	0	2	0	1	2
Scene Design	0	0	0	2	1
Theatre Technology	0	1	2	1	2
Subtotal	10	28	22	25	26
Liberal Arts & Sciences					
Art	4	7	13	8	8
Biology	31	22	30	25	15
Chemistry	1	2	5	3	8
Communications	74	60	55	50	48
Computer Science	83	101	121	111	112
Economics	10	11	5	9	4
English	19	19	15	28	21
French	2	0	1	1	4
Geography	2	2	5	0	2
German	1	0	1	0	0
History	20	9	16	14	19
Latin American Studies	0	0	1	1	0
Mathematics	10	13	14	13	19
Medical Technology	1	2	2	2	2
Music	1	--	--	--	--
Nursing	71	75	49	53	57
Philosophy	2	4	2	5	5
Physics	4	8	4	7	9
Political Science	59	45	33	49	35
Psychology	42	39	36	42	43
Religious Studies	0	2	2	1	2
Radiologic Technology	9	14	7	8	3
Social Science	13	14	4	13	5
Sociology	22	15	21	30	13
Spanish	3	2	4	0	0
Subtotal	484	466	446	473	434

(continued)

Table 4.3

	1982-83	1983-84	1984-85	1985-86	1986-87
Music					
Music Business	--	--	--	--	1
Music Composition	5	0	2	3	1
Music Education	11	4	8	11	7
Music Performance	23	20	26	11	20
Music Theory	9	8	8	2	6
Music Therapy	2	2	8	2	1
Jazz Studies	--	--	--	2	2
Subtotal	50	34	52	31	38
School for New Learning	93	96	77	100	84
Undergraduate Total	1,408	1,354	1,176	1,206	1,258
Master's Degrees					
Commerce					
Accounting	85	67	90	72	58
Association Management	--	--	--	--	1
Economics	12	6	2	7	5
Entrepreneurship	--	--	--	--	5
Finance	290	262	277	251	260
International Business	11	20	20	18	16
Management	27	0	0	--	--
Operations Management	17	24	16	32	22
Human Resource Management	--	25	30	23	22
Marketing	101	92	90	100	90
Quantitative Methods	1	3	2	0	0
Systems	50	48	34	34	44
Taxation	71	80	76	90	92
Subtotal	665	627	637	627	615
Education					
Administration & Supervision	8	7	11	4	0
Business Education	2	3	1	1	2
Curriculum/Program Dvlpmt	28	11	7	4	5
Human Services & Counseling	9	4	7	7	12
Reading & Learning Disabil.	18	12	18	9	11
Educational Leadership	--	--	--	5	11
Subtotal	65	37	44	30	41
Theatre School					
Acting	1	1	4	6	4
Costume Design	0	0	1	0	2
Directing	1	0	0	3	4
Subtotal	2	1	5	9	10
Law - Law Taxation - Total	32	25	22	24	17

(continued)

Table 4.3

	1982-83	1983-84	1984-85	1985-86	1986-87
Liberal Arts & Sciences					
Biology	5	3	0	3	3
Chemistry	6	4	6	3	3
Computer Science	71	122	112	150	149
Economics	11	6	4	9	6
English	12	3	13	5	4
History	5	3	4	2	1
Interdisciplinary Studies	1	4	4	4	4
Liberal Studies	--	--	5	4	0
Math Education	--	--	--	16	27
Mathematics	1	3	13	1	7
Nursing	19	22	18	23	14
Philosophy	2	6	4	5	2
Physics	2	3	2	4	12
Psychology - Ind, Exp, Clin	9	7	10	17	16
Public Service	35	39	31	21	30
Rehabilitation Services	16	13	16	12	12
Religious Studies	3	1	2	0	0
Science Teaching	--	--	--	--	3
Sociology	5	2	2	6	2
Subtotal	203	241	246	285	295
Music					
Music Composition	1	1	1	3	1
Music Education	3	5	3	4	0
Music Performance	10	11	19	14	8
Subtotal	14	17	23	21	9
School for New Learning	--	--	--	--	1
Master's Total	981	948	977	996	988
Professional					
Law - J.D. - Total	338	292	311	312	255
Certificates					
Early Child Care Development	0	14	11	14	12
Acting	3	4	2	7	1
Production	2	0	0	0	0
Costume Construction	3	0	0	0	0
Design	0	1	0	0	0
Subtotal	8	19	13	21	13
Doctorates					
Liberal Arts & Sciences					
Biology	0	0	0	1	1
Philosophy	3	1	3	2	2
Psychology, Ind, Exp, Clin	10	10	7	7	6
Subtotal	13	11	10	10	9
TOTAL ALL DEGREES	2,748	2,624	2,487	2,545	2,523

Table 5.1

Annual Student Financial Aid
 FY 1983 - FY 1987
 (In Thousands of Dollars)

UNDERGRADUATE	FY1983	FY1984	% CHANGE	FY1985	% CHANGE	FY1986	% CHANGE	FY1987	% CHANGE
FEDERAL FUNDS:	\$2,337	\$2,593	10.95%	\$2,808	8.29%	\$3,051	8.65%	\$3,045	-0.20%
Grants	\$1,858	\$1,999	7.59%	\$2,168	8.45%	\$2,555	17.85%	\$2,381	-6.81%
Loans	\$365	\$414	13.42%	\$423	2.17%	\$335	-20.80%	\$449	34.03%
Employment	\$114	\$180	57.89%	\$217	20.56%	\$161	-25.81%	\$215	33.54%
STATE FUNDS:	\$7,133	\$7,957	11.55%	\$8,586	7.90%	\$9,686	12.81%	\$9,948	2.70%
Grants	\$3,814	\$4,052	6.24%	\$4,473	10.39%	\$5,530	23.63%	\$5,686	2.82%
Loans	\$3,319	\$3,905	17.66%	\$4,113	5.33%	\$4,156	1.05%	\$4,262	2.55%
Employment	\$0	\$0	N/A	\$0	N/A	\$0	N/A	\$0	N/A
INSTITUTIONAL FUNDS:	\$2,104	\$2,593	23.24%	\$3,349	29.16%	\$4,138	23.56%	\$3,855	-6.84%
Grants	\$1,467	\$1,528	4.16%	\$1,876	22.77%	\$2,241	19.46%	\$2,771	23.65%
Loans	\$0	\$480	N/A	\$749	56.04%	\$880	17.49%	\$0	-100.00%
Employment	\$637	\$585	-8.16%	\$724	23.76%	\$1,017	40.47%	\$1,084	6.59%
OTHER SOURCES OF FUNDS:	\$292	\$325	11.30%	\$387	19.08%	\$467	20.67%	\$625	33.83%
Grants	\$159	\$143	-10.06%	\$190	32.87%	\$140	-26.32%	\$219	56.43%
Loans	133	182	36.84%	\$197	8.24%	\$327	65.99%	\$406	24.16%
Undergrad Fin Aid	\$11,866	\$13,468	13.50%	\$15,130	12.34%	\$17,342	14.62%	\$17,473	0.76%

(continued)

Table 5.1 (continued)

GRADUATE	FY1983	FY1984	% CHANGE	FY1985	% CHANGE	FY1986	% CHANGE	FY1987	% CHANGE
FEDERAL FUNDS:	\$724	\$503	-30.52%	\$467	-7.16%	\$468	0.21%	\$673	43.80%
Grants	\$41	\$10	-75.61%	\$24	140.00%	\$58	141.67%	\$127	118.97%
Loans	\$578	\$374	-35.29%	\$326	-12.83%	\$343	5.21%	\$455	32.65%
Employment	\$105	\$119	13.33%	\$117	-1.68%	\$67	-42.74%	\$91	35.82%
STATE FUNDS:	\$3,516	\$3,947	12.26%	\$4,109	4.10%	\$3,464	-15.70%	\$3,494	0.87%
Grants	\$0	\$0	N/A	\$0	N/A	\$9	N/A	\$33	266.67%
Loans	\$3,516	\$3,947	12.26%	\$4,109	4.10%	\$3,455	-15.92%	\$3,461	0.17%
Employment	\$0	\$0	N/A	\$0	N/A	\$0	N/A	\$0	N/A
INSTITUTIONAL FUNDS:	\$1,680	\$2,112	25.71%	\$2,665	26.18%	\$2,848	6.87%	\$2,784	-2.25%
Grants	\$1,290	\$1,305	1.16%	\$1,548	18.62%	\$1,669	7.82%	\$1,871	12.10%
Loans	\$0	\$366	N/A	\$552	50.82%	\$513	-7.07%	\$0	-100.00%
Employment	\$390	\$441	13.08%	\$565	28.12%	\$666	17.88%	\$913	37.09%
OTHER SOURCES OF FUNDS:	\$412	\$534	29.61%	\$719	34.64%	\$1,200	66.90%	\$1,075	-10.42%
Grants	\$98	\$82	-16.33%	\$149	81.71%	\$60	-59.73%	\$165	175.00%
Loans	\$314	\$452	43.95%	\$570	26.11%	\$1,140	100.00%	\$910	-20.18%
Grad Fin Aid	\$6,332	\$7,096	12.07%	\$7,960	12.18%	\$7,980	0.25%	\$8,026	0.58%

(continued)

Table 5.1 (continued)

COMBINED	FY1983	FY1984	% CHANGE	FY1985	% CHANGE	FY1986	% CHANGE	FY1987	% CHANGE
FEDERAL FUNDS:	\$3,061	\$3,096	1.14%	\$3,275	5.78%	\$3,519	7.45%	\$3,718	5.66%
Grants	\$1,899	\$2,009	5.79%	\$2,192	9.11%	\$2,613	19.21%	\$2,508	-4.02%
Loans	\$943	\$788	-16.44%	\$749	-4.95%	\$678	-9.48%	\$904	33.33%
Employment	\$219	\$299	36.53%	\$334	11.71%	\$228	-31.74%	\$306	34.21%
STATE FUNDS:	\$10,649	\$11,904	11.79%	\$12,695	6.64%	\$13,150	3.58%	\$13,442	2.22%
Grants	\$3,814	\$4,052	6.24%	\$4,473	10.39%	\$5,539	23.83%	\$5,719	3.25%
Loans	\$6,835	\$7,852	14.88%	\$8,222	4.71%	\$7,611	-7.43%	\$7,723	1.47%
Employment	\$0	\$0	N/A	\$0	N/A	\$0	N/A	\$0	N/A
INSTITUTIONAL FUNDS:	\$3,784	\$4,705	24.34%	\$6,014	27.82%	\$6,986	16.16%	\$6,639	-4.97%
Grants	\$2,757	\$2,833	2.76%	\$3,424	20.86%	\$3,910	14.19%	\$4,642	18.72%
Loans	\$0	\$846	N/A	\$1,301	53.78%	\$1,393	7.07%	\$0	-100.00%
Employment	\$1,027	\$1,026	-0.10%	\$1,289	25.63%	\$1,683	30.57%	\$1,997	18.66%
OTHER SOURCES OF FUNDS:	\$704	\$859	22.02%	\$1,106	28.75%	\$1,667	50.72%	\$1,700	1.98%
Grants	\$257	\$225	-12.45%	\$339	50.67%	\$200	-41.00%	\$384	92.00%
Loans	\$447	\$634	41.83%	\$767	20.98%	\$1,467	91.26%	\$1,316	-10.29%
Total Fin Aid	\$18,198	\$20,564	13.00%	\$23,090	12.28%	\$25,322	9.67%	\$25,499	0.70%

Source: ISSC Annual SFA Survey

OIPR 12-87

University Balance Sheets
 thousands of dollars)
 ne 30, of the reported year
 Total All Funds

Table 5.2

ACTUAL AMOUNTS REPORTED

PERCENTAGE CHANGES

	1987	1986	1985	1984	1983	87-86	86-85	85-84	84-83	87-83
ASSETS										
Other Receivables	\$373	\$278	\$917	\$961	\$1,148	34.2%	-69.7%	-4.6%	-16.3%	-67.5%
Other Receivables	\$17,787	\$17,125	\$14,569	\$13,652	\$19,346	3.9%	17.5%	6.7%	-29.4%	-8.1%
Other Receivables	(\$3,554)	(\$2,915)	(\$2,289)	(\$2,617)	(\$2,213)	21.9%	27.3%	-12.5%	18.3%	60.6%
Other Receivables	\$41,249	\$41,322	\$34,364	\$34,892	\$30,774	-0.2%	20.2%	-1.5%	13.4%	34.0%
Other Receivables	\$84,451	\$72,423	\$62,315	\$59,193	\$51,376	16.6%	16.2%	5.3%	15.2%	64.4%
Other Receivables	\$1,909	\$1,921	\$904	\$910	\$1,028	-0.6%	112.5%	-0.7%	-11.5%	85.7%
Other Receivables	\$10,954	\$7,039	\$4,304	\$3,794	\$3,881	55.6%	63.5%	13.4%	-2.2%	182.2%
Other Funds										
Other Funds	\$153,169	\$137,193	\$115,084	\$110,785	\$105,340	11.6%	19.2%	3.9%	5.2%	45.4%

LIABILITIES AND FUND BALANCES

Liabilities and Accrued Expenses	\$6,202	\$5,662	\$3,988	\$3,632	\$7,392	9.5%	42.0%	9.8%	-50.9%	-16.1%
Liabilities and Accrued Expenses	\$6,328	\$5,594	\$4,913	\$4,501	\$4,327	13.1%	13.9%	9.2%	4.0%	46.2%
Liabilities and Accrued Expenses	\$46,012	\$43,750	\$34,384	\$35,220	\$31,611	5.2%	27.2%	-2.4%	11.4%	45.6%
Liabilities and Accrued Expenses	\$2,970	\$347	\$0	\$0	\$0	755.9%	N/A	-	-	N/A
Liabilities and Accrued Expenses	\$10,954	\$7,039	\$4,065	\$3,794	\$3,881	55.6%	73.2%	7.1%	-2.2%	182.2%
Liabilities										
Liabilities	\$72,466	\$62,392	\$47,350	\$47,147	\$47,211	16.1%	31.8%	0.4%	-0.1%	53.5%

ES:

Restricted	\$834	\$823	\$806	\$788	\$764	1.3%	2.1%	2.3%	3.1%	9.2%
Restricted	\$3,552	\$3,847	\$3,207	\$3,031	\$2,137	-7.7%	20.0%	5.8%	41.8%	66.2%
Restricted	\$5,629	\$6,001	\$5,906	\$6,449	\$6,259	-6.2%	1.6%	-8.4%	3.0%	-10.1%
Restricted and Similar:										
Restricted	\$10,627	\$9,195	\$7,627	\$6,615	\$5,670	15.6%	20.6%	15.3%	16.7%	87.4%
Restricted	\$12,725	\$11,396	\$11,232	\$11,218	\$9,887	11.7%	1.5%	0.1%	13.5%	28.7%
Restricted	\$47,336	\$43,539	\$38,956	\$35,537	\$33,412	8.7%	11.8%	9.6%	6.4%	41.7%
Restricted										
Restricted	\$80,703	\$74,801	\$67,734	\$63,638	\$58,129	7.9%	10.4%	6.4%	9.5%	38.8%
Restricted										
Restricted	\$153,169	\$137,193	\$115,084	\$110,785	\$105,340	11.6%	19.2%	3.9%	5.2%	45.4%
Restricted										
Restricted						4.2%	4.4%	6.7%	5.4%	22.3%

on Rates

University Financial Statements

RSITY STATEMENT OF CURRENT FUNDS REVENUES,
 DITURES AND OTHER CHANGES
 thousands of dollars)
 ne 30, of the reported year
 RENT UNRESTRICTED FUNDS***

Table 5.4

	ACTUAL AMOUNTS REPORTED							PERCENTAGE CHANGES		
	1987	1986	1985	1984	1983	87-86	86-85	85-84	84-83	87-83
and General:										
and Fees	\$57,916	\$51,767	\$45,254	\$41,730	\$40,687	11.9%	14.4%	8.4%	2.6%	42.3%
at Grants	1,298	1,131	1,011	989	988	14.8%	11.9%	2.2%	0.1%	31.4%
ifts and Grants	1,918	1,756	1,544	2,195	2,189	9.2%	13.7%	-29.7%	0.3%	-12.4%
at Income	859	805	1,225	1,088	2,035	6.7%	-34.3%	12.6%	-46.5%	-57.8%
urces	1,287	1,615	1,580	1,093	955	-20.3%	2.2%	44.6%	14.5%	34.8%
ducation and General	63,278	57,074	50,614	47,095	46,854	10.9%	12.8%	7.5%	0.5%	35.1%
ctivities	8,930	7,451	7,315	7,287	6,046	19.8%	1.9%	0.4%	20.5%	47.7%
venues	72,208	64,525	57,929	54,382	52,900	11.9%	11.4%	6.5%	2.8%	36.5%
AND MANDATORY TRANSFERS:										
and General:										
on	25,291	21,818	20,716	18,847	18,432	15.9%	5.3%	9.9%	2.3%	37.2%
Support	10,241	9,332	7,740	6,827	6,438	9.7%	20.6%	13.4%	6.0%	59.1%
ervice	3,727	3,542	2,842	2,744	2,353	5.2%	24.6%	3.6%	16.6%	58.4%
onal Support	8,512	8,301	7,585	6,765	6,598	2.5%	9.4%	12.1%	2.5%	29.0%
Plant	6,036	5,408	5,051	5,266	4,950	11.6%	7.1%	-4.1%	6.4%	21.9%
id	3,270	2,763	2,129	1,995	2,403	18.3%	29.8%	6.7%	-17.0%	36.1%
ervice	653	569	615	500	471	14.8%	-7.5%	23.0%	6.2%	38.6%
	77	43	-	-	-	79.1%	N/A	-	-	N/A
efore Mandatory Transfers	57,807	51,776	46,678	42,944	41,645	11.6%	10.9%	8.7%	3.1%	38.8%
ransfers	2,244	1,444	3,063	2,829	1,463	55.4%	-52.9%	8.3%	93.4%	53.4%
ducational and General	60,051	53,220	49,741	45,773	43,108	12.8%	7.0%	8.7%	6.2%	39.3%
ctivities Expenditures	8,224	7,006	6,775	6,094	5,847	17.4%	3.4%	11.2%	4.2%	40.7%
ransfers For Principal										
est	120	-	176	145	172	N/A	-100.0%	21.4%	-15.7%	-30.2%
uxiliary Activities	8,344	7,006	6,951	6,239	6,019	19.1%	0.8%	11.4%	3.7%	38.6%
ditures and Mandatory Transfers	68,395	60,226	56,692	52,012	49,127	13.6%	6.2%	9.0%	5.9%	39.2%

(continued)

Table 5.4 (continued)

	1987	1986	1985	1984	1983	87-86	86-85	85-84	84-83	87-83
REVENUES BEFORE DISCRETIONARY ADJUSTMENTS AND OTHER CHANGES	3,813	4,299	1,237	2,370	3,773	-11.3%	247.5%	-47.8%	-37.2%	1.1%
PRIMARY TRANSFERS AND OTHER CHANGES:										
Unexpended Receipts Not Expended	(3,201)	(4,036)	(1,204)	(1,126)	(1,756)	-20.7%	235.2%	6.9%	-35.9%	82.3%
Designated Endowment Funds	(504)	(226)	(50)	(1,220)	(1,934)	123.0%	352.0%	-95.9%	-36.9%	-73.9%
Net	(97)	(20)	35		(36)	385.0%	-157.1%	N/A	-100.0%	169.4%
CHANGE IN FUND BALANCE	\$11	\$17	\$18	\$24	\$47	-35.3%	-5.6%	-25.0%	-48.9%	-76.6%
Contribution Rates						4.2%	4.4%	6.7%	5.4%	22.3%

University Audited Financial Statements

Table 6.1

Full-Time Faculty by Rank and Sex
(In Headcount)

	1983-84		1984-85		1985-86		1986-87		1987-88	
	N	%	N	%	N	%	N	%	N	%
ALL	-----		-----		-----		-----		-----	
Professor	98	25.7%	105	28.3%	111	28.8%	110	27.2%	104	25.1%
Assoc. Professor	156	40.8%	151	40.7%	157	40.7%	166	41.0%	162	39.0%
Asst. Professor	100	26.2%	79	21.3%	83	21.5%	93	23.0%	103	24.8%
Instructor	28	7.3%	32	8.6%	33	8.5%	30	7.4%	40	9.6%
No Rank	*	0.0%	4	1.1%	2	0.5%	6	1.5%	6	1.4%
Total	382	100.0%	371	100.0%	386	100.0%	405	100.0%	415	100.0%
MEN										
Professor	87	30.6%	92	33.8%	97	34.8%	94	32.2%	90	30.6%
Assoc. Professor	123	43.3%	114	41.9%	119	42.7%	126	43.2%	117	39.8%
Asst. Professor	56	19.7%	44	16.2%	47	16.8%	57	19.5%	68	23.1%
Instructor	18	6.3%	20	7.4%	16	5.7%	13	4.5%	19	6.5%
No Rank	*	0.0%	2	0.7%	0	0.0%	2	0.7%	0	0.0%
Total	284	100.0%	272	100.0%	279	100.0%	292	100.0%	294	100.0%
WOMEN										
Professor	11	11.2%	13	13.1%	14	13.1%	16	14.2%	14	11.6%
Assoc. Professor	33	33.7%	37	37.4%	38	35.5%	40	35.4%	45	37.2%
Asst. Professor	44	44.9%	35	35.4%	36	33.6%	36	31.9%	35	28.9%
Instructor	10	10.2%	12	12.1%	17	15.9%	17	15.0%	21	17.4%
No Rank	*	0.0%	2	2.0%	2	1.9%	4	3.5%	6	5.0%
Total	98	100.0%	99	100.0%	107	100.0%	113	100.0%	121	100.0%

*Data not available

Source: AAUP Survey

OIPR 12-87

Table 6.2
 Faculty Tenure Status by Rank and Sex
 Fall 1983 - Fall 1987

	1983-84	1984-85	1985-86	1986-87	1987-88
	-----	-----	-----	-----	-----
	%	%	%	%	%
All					
Professor	97	99	97	99	98
Assoc. Professor	76	78	82	82	91
Asst. Professor	16	23	23	20	19
Instructor	7	6	3	3	3
All Ranks	61	65	67	65	66
Men					
Professor	97	99	97	100	98
Assoc. Professor	75	79	82	87	97
Asst. Professor	18	30	26	21	19
Instructor	11	10	6	8	5
All Ranks	66	72	73	74	73
Women					
Professor	100	100	100	94	100
Assoc. Professor	81	76	82	68	78
Asst. Professor	13	14	19	19	20
Instructor	0	0	0	0	0
All Ranks	45	46	49	43	49

Source: AAUP Survey

OIPR 12-87

Table 6.3

Faculty and Administrative Staff
Fall 1983 - Fall 1987

	1983	1984	1985	1986	1987
	----	----	----	----	----
Full-time Faculty *	402	392	386	405	415
Part-time Faculty	290	317	360	374	319
Full-time Professional	320	332	354	393	348
Full-time Non-Professional	267	283	245	250	259
Part-time Non-Professional	140	129	159	143	140
Faculty and Staff Combined	1,419	1,453	1,504	1,565	1,481

*excludes Deans and Administrators

Source: Personnel Office
Controller's Office

OIPR 12-87

Table 7.1

University Library Holdings
1983 - 1987

	March 1983 ----	March 1984 ----	March 1985 ----	March 1986 ----	March 1987 ----
Total University					

SERIAL TITLES					
Current Paid	6,664	7,055	7,369	7,698	7,857
Current Donated	759	774	806	820	829
Ceased	4,011	4,525	4,965	5,277	5,789
Total	11,434	12,354	13,140	13,795	14,475
VOLUMES					
Bound	466,169	478,878	492,628	507,836	522,635
Microform	105,071	106,893	110,177	113,721	119,540
Total	571,240	585,771	602,805	621,557	642,175
University Library					

SERIAL TITLES					
Current Paid	2,889	2,962	3,042	3,120	3,211
Current Donated	232	220	224	234	238
Ceased	1,728	1,748	1,820	1,861	1,961
Total	4,849	4,930	5,086	5,215	5,410
VOLUMES					
Bound	333,325	343,935	354,609	365,661	376,131
Microform	31,260	30,397	30,688	31,133	33,344
Total	364,585	374,332	385,297	396,794	409,475
Law Library					

SERIAL TITLES					
Current Paid	3,775	4,093	4,327	4,578	4,646
Current Donated	527	554	582	586	591
Ceased	2,283	2,777	3,145	3,416	3,828
Total	6,585	7,424	8,054	8,580	9,065
VOLUMES					
Bound	132,844	134,943	138,019	142,175	146,504
Microform	73,811	76,496	79,489	82,588	86,196
Total	206,655	211,439	217,508	224,763	232,700

Source: DePaul Library

OIPR 12-87

Table 7.2

Office of Sponsored Programs and Research Grant Activity
1984 - 1987

	1984-1985	1985-1986	% Change 84-85 to 85-86	1986-1987	% Change 85-86 to 86-87
	-----	-----	-----	-----	-----
APPLICATIONS					

# of Research Grant Applications	16	33	106.3	29	(12.1)
# of Other Grant Applications	20	32	60.0	27	(15.6)
TOTAL GRANT APPLICATIONS	36	65	80.6	56	(13.8)
AWARDS					

# of Research Grants Awarded	3	13	333.3	15	15.4
# of Other Grants Awarded	14	19	35.7	24	26.3
TOTAL GRANTS AWARDED	17	32	88.2	39	21.9
AGENCY FUNDING					

Dollars Applied for*	\$6,114,393	\$8,763,954	43.3	\$5,699,053	(35.0)
Dollars Awarded	\$1,097,472	\$1,115,997	1.7	\$1,935,675	73.4
DEPAUL COST-SHARE FUNDING					

Dollars Applied for*	\$8,330,004	\$9,102,031	9.3	\$1,119,325	(87.7)
Dollars Awarded	\$690,292	\$329,788	(52.2)	\$756,527	129.4
NOTABLE CHANGES BY COLLEGE/DEPARTMENT					

Academic Affairs	0	9	--	5	(44.4)
Commerce	1	4	300.0	5	25.0
Education	4	6	50.0	8	33.3
Liberal Arts & Sciences	28	43	53.6	33	(23.3)
School for New Learning	0	1	--	2	100.0
Law	--	1.0	--	3	200.0

*In 1984-85 & 1985-86 a \$3,500,000 dormitory loan application was included in these dollar amounts. This application was not submitted in 1986-87.

Table 7.3

Credit Hour Enrollments By Building
Fall 1987

Building Name -----	Credit Hours -----	% of Total -----
LOOP CAMPUS		
Administration	8,826.0	
Lewis Center	61,013.0	
O'Malley	9,302.0	
Subtotal	79,141.0	58.7
LINCOLN PARK		
Alumni Hall	988.0	
Byrne Hall	2,644.5	
Commons Building	82.0	
Concert Hall	122.0	
Fine Arts	2,518.0	
Levan Hall	2,614.0	
McGaw Hall	10,982.0	
St. Vincent Center	84.0	
Schmitt Academic Center	26,320.0	
Stuart Center	32.0	
Theatre Building	2,384.0	
Lincoln Park	446.0	
Subtotal	49,216.5	36.5
SUBURBAN CAMPUSES		
O'Hare Campus	2,542.0	
Oakbrook Campus	3,270.0	
Subtotal	5,812.0	4.3
OTHER		
Adler	32.0	
Daley Center	243.0	
Off-Campus	472.0	
Subtotal	747.0	0.6
TOTAL	134,916.5	100.0